

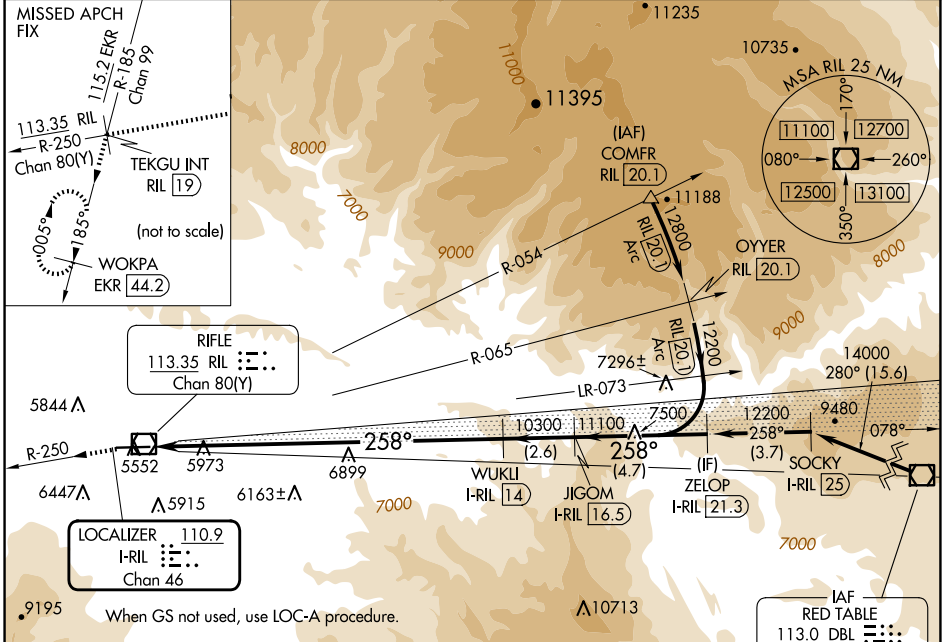
LOC/DME I-RIL 110.9 Chan 46	APP CRS 258°	Rwy Ldg TDZE 7000 5537	Apt Elev 5537
--	------------------------	--	-------------------------

ILS RWY 26

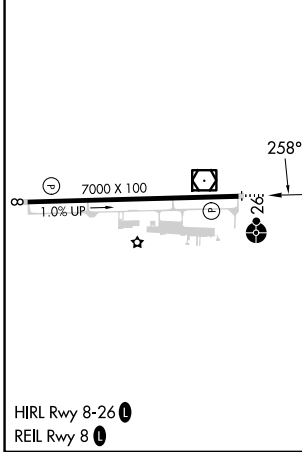
RIFLE GARFIELD COUNTY (R.I.L)

DME required.	ODALS 	MISSED APPROACH: Climb to 14000 on RIL VOR/DME R-250 to TEKGU INT/RIL 19 DME and on EKR VOR/DME R-185 to WOKPA/EKR 44.2 DME and hold. Missed approach requires minimum climb of 420 feet per NM to 9600; if unable to meet climb gradient, see LOC-A.
---------------	-----------	---

ASOS 135.275	DENVER CENTER 134.95 327.075	UNICOM 122.8 (CTAF) 0
------------------------	--	---------------------------------



ELEV 5537	TDZE 5537
-----------	-----------



Procedure NA for arrival on DBL VOR/DME airway radials 244 CW 297.

14000	TEKGU INT	EKR R-185	WOKPA EKR 44.2	WUKLI I-RIL 14	JIGOM I-RIL 16.5	ZELOP I-RIL 21.3
RIL R-250						
Use I-RIL DME when on localizer course.				10300	11100	12200
				12.7 NM	2.6 NM	4.7 NM
CATEGORY	A	B	C	D		
S-ILS 26	6150-1½		613 (700-1½)			

SW-1, 16 APR 2026 to 14 MAY 2026

SW-1, 16 APR 2026 to 14 MAY 2026