

APP CRS	Rwy Ldg	<b>7000</b>
<b>078°</b>	TDZE	<b>5498</b>
	Apt Elev	<b>5537</b>

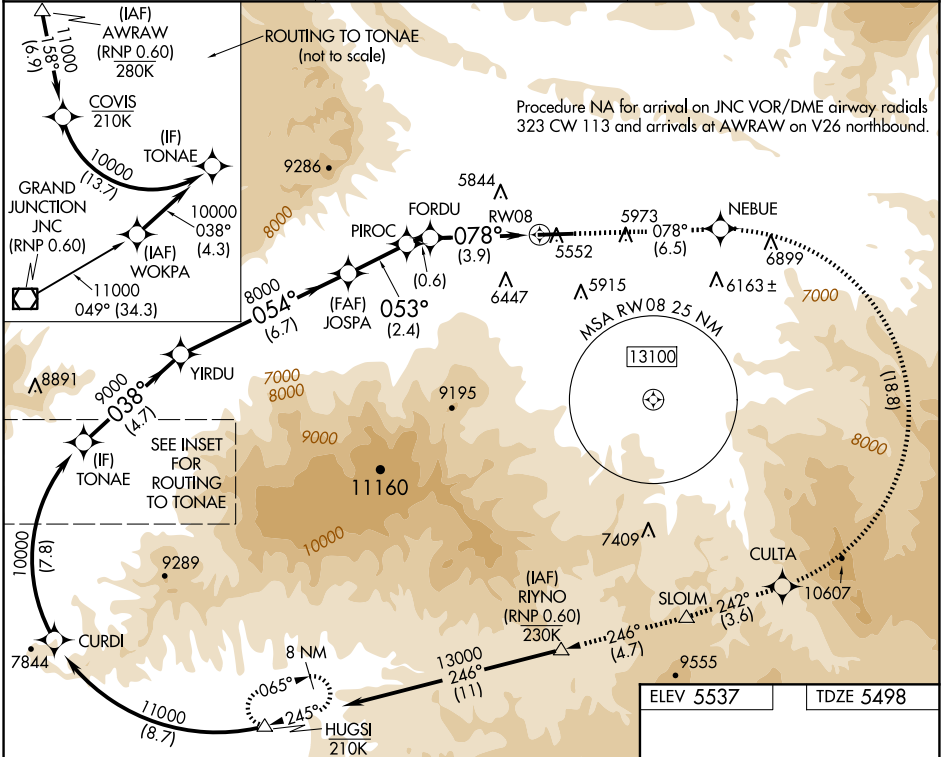
# RNAV (RNP) Z RWY 8

RIFLE GARFIELD COUNTY (R.I.L.)

**RF and GPS required. Procedure NA for wingspans greater than 136 feet.**  
 For uncompensated Baro-VNAV systems, procedure NA below -24°C (-11°F) or above 54°C (130°F).  
 \*Missed approach requires minimum climb of 425 feet per NM to 11300.  
 \*\*Missed approach requires minimum climb of 425 feet per NM to 10000; if unable, see RNAV (GPS) Y RWY 8.

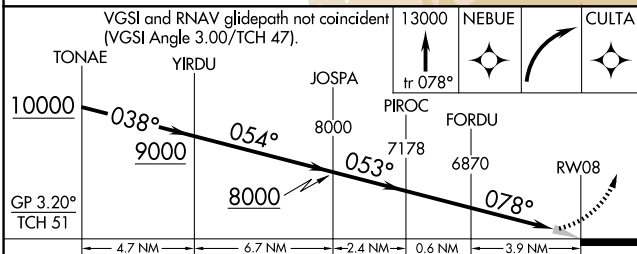
**MISSED APPROACH:** Climb to 13000 on track 078° to NEBUE, right turn to CULTA, and track 242° to SLOLM and track 246° to RYNO and track 246° to HUGSI and hold.

ASOS <b>135.275</b>	DENVER CENTER <b>134.95 327.075</b>	UNICOM <b>122.8 (CTAF) 0</b>
------------------------	--	---------------------------------



SW-1, 16 APR 2026 to 14 MAY 2026

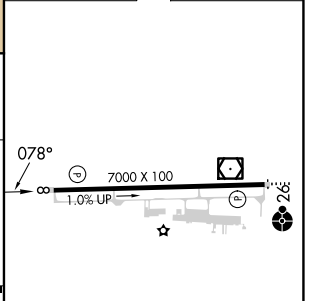
SW-1, 16 APR 2026 to 14 MAY 2026



ELEV 5537	TDZE 5498
-----------	-----------

CATEGORY	A	B	C	D
RNP 0.10 DA*	5748-1	250 (300-1)		NA
RNP 0.30 DA**	6391-3	893 (900-3)		NA

**AUTHORIZATION REQUIRED**



HIRL Rwy 8-26 **0**  
 REIL Rwy 8 **0**