

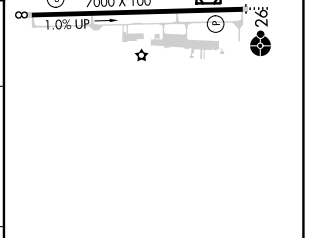
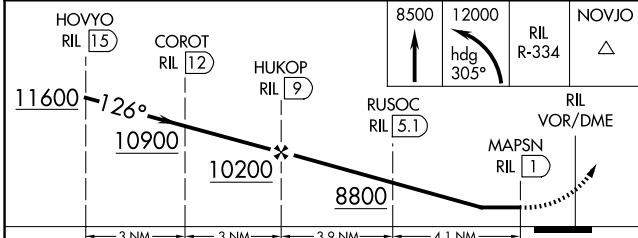
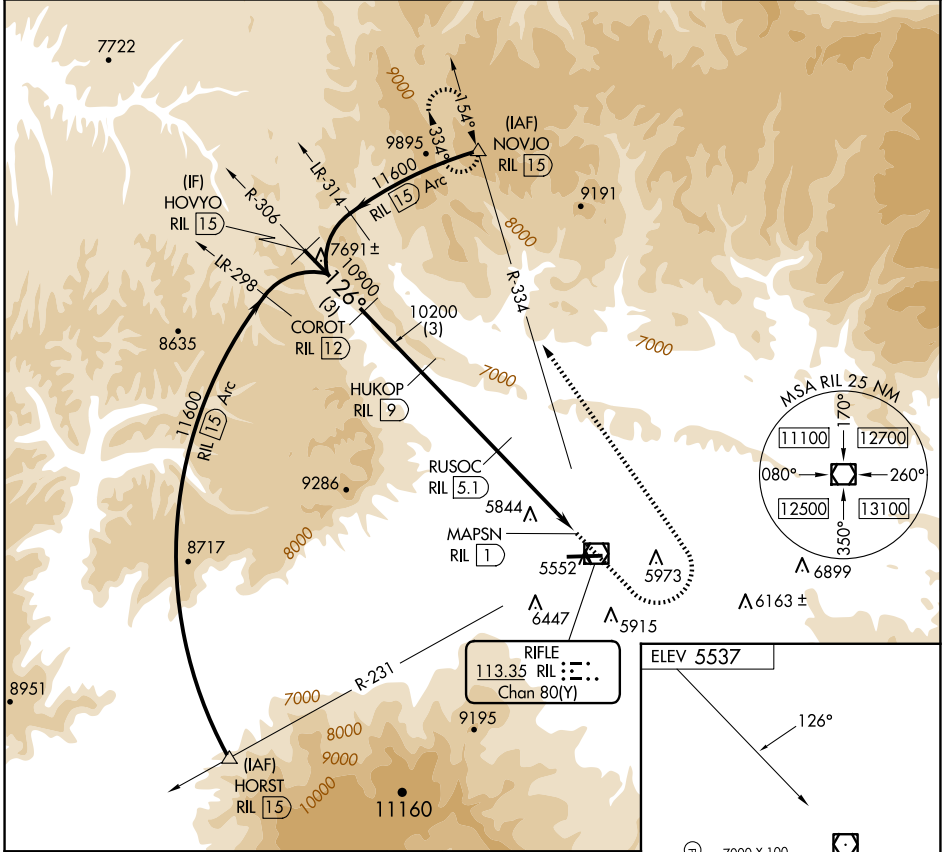
VOR/DME RIL <b>113.35</b> Chan 80(Y)	APP CRS <b>126°</b>	Rwy Ldg TDZE Apt Elev <b>N/A</b> <b>N/A</b> <b>5537</b>
--	------------------------	---

# VOR/DME-C

RIFLE GARFIELD COUNTY (RIL)

<p><b>⚠</b> Circling NA south of Rwy 8-26 at night.</p> <p><b>⚠</b> -13°C</p>	<p>MISSED APPROACH: Climb to 8500 then climbing left turn 12000 on heading 305° and RIL VOR/DME R-334 to NOVJO/15 DME and hold, continue climb-in-hold to 12400.</p>
---	--

ASOS <b>135.275</b>	DENVER CENTER <b>134.95 327.075</b>	UNICOM <b>122.8 (CTAF)</b>
------------------------	--	-------------------------------



CATEGORY	A	B	C	D
<b>C</b> CIRCLING	7360-1¼ 1823 (1900-1¼)	7360-1½ 1823 (1900-1½)	7360-3 1823 (1900-3)	NA

HIRL Rwy 8-26 **⓪**  
REIL Rwy 8 **⓪**

SW-1, 16 APR 2026 to 14 MAY 2026

SW-1, 16 APR 2026 to 14 MAY 2026