

APP CRS	Rwy Idg	3252
146°	TDZE	391
	Apt Elev	391

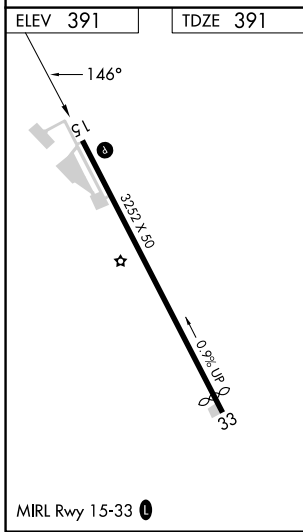
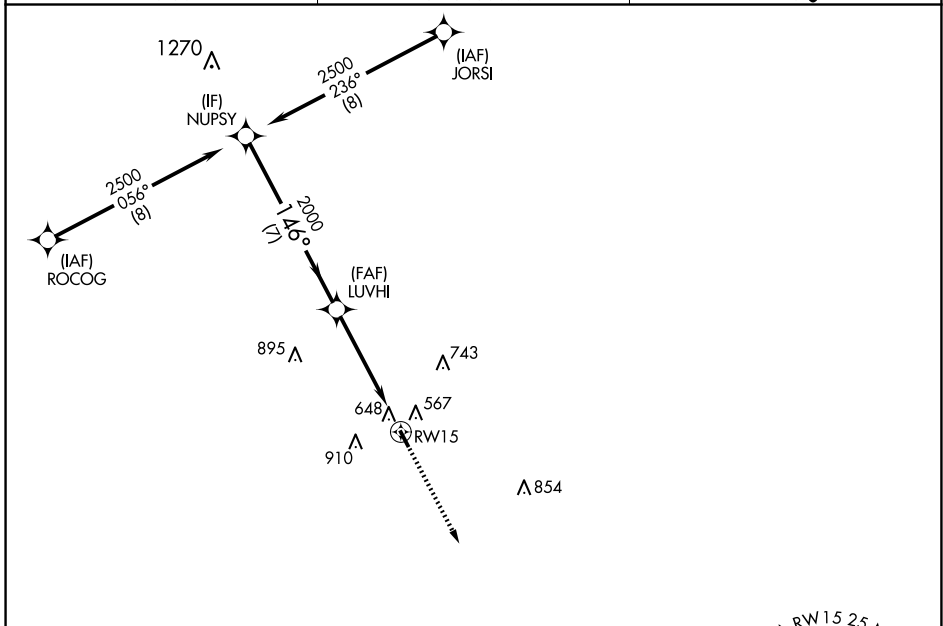
RNAV (GPS) RWY 15

CALDWELL MUNI (RWV)

RNP APCH - GPS.
 RADAR required.
 ⚠ When local altimeter setting not received, use College Station altimeter setting and increase all MDA 60 feet. Circling NA east of Rwy 15-33. Procedure NA at night. Rwy 15 helicopter visibility reduction below 1 SM NA.

MISSED APPROACH: Climb to 2000 direct KOKEC and hold.

AWOS-3PT 118.35	HOUSTON APP CON 134.3 360.85	CTAF 122.9
---------------------------	--	----------------------



KOKEC

MSA RW 15 2.5 NM
2300

	VGSI and descent angles not coincident (VGSI Angle 3.00/TCH 42).	2000 	KOKEC
NUPSY 2500	146°	LUVHI 2000	RWY 15 3.00° TCH 36
7 NM		4.9 NM	
CATEGORY	A	B	C
LNAV MDA	960-1	569 (600-1)	NA
CIRCLING	1000-1 609 (700-1)	1220-1¼ 829 (900-1¼)	NA

SC-5, 16 APR 2026 to 14 MAY 2026

SC-5, 16 APR 2026 to 14 MAY 2026