

WAAS CH <b>99343</b> <b>W17A</b>	APP CRS <b>167°</b>	Rwy Idg TDZE Apt Elev	<b>5000</b> <b>2991</b> <b>2991</b>
--	------------------------	-----------------------------	---

# RNAV (GPS) RWY 17

ATWOOD-RAWLINS COUNTY CITY-COUNTY (ADT)

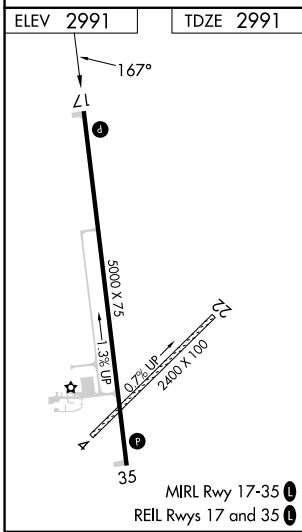
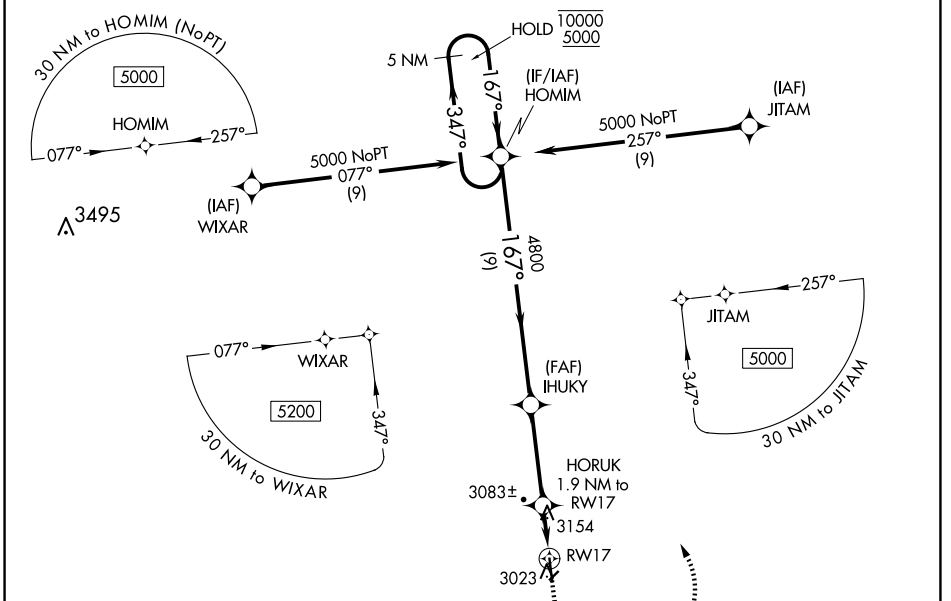
RNP APCH.

**▼** Circling NA to Rwy 4 and 22. Circling Rwy 35 NA at night. Baro-VNAV and VDP NA when using Colby altimeter setting. Rwy 17 helicopter visibility reduction below 3/4 SM NA. For uncompensated Baro-VNAV systems, LNAV/VNAV NA below -20°C or above 54°C. When local altimeter setting not received, use Colby altimeter setting; increase all DAs to 3326 feet; increase all MDAs 100 feet and visibility Cats C and D 1/4 mile.

**▲** NA

MISSED APPROACH: Climb to 5000 then climbing left turn to 5000 direct HOMIM and hold.

AWOS-3 <b>118.675</b>	DENVER CENTER <b>132.7 226.675</b>	UNICOM <b>122.7 (CTAF) 0</b>
--------------------------	---------------------------------------	---------------------------------



ELEV 2991	TDZE 2991	<p>5 NM Holding Pattern</p> <p>HOMIM</p> <p>IHUKY 4800</p> <p>HORUK 1.9 NM to RWY 17</p> <p>*1.2 NM to RWY 17</p> <p>*3640</p> <p>9 NM    3.6 NM    0.7    1.2</p>				
		10000	5000	3500	5000	HOMIM
		GP 3.00°	TCH 41	*LNAV only		
CATEGORY	A	B	C	D		
LPV DA	3241-1 250 (300-1)					
LNAV/VNAV DA	3241-1 250 (300-1)					
LNAV MDA	3420-1	429 (500-1)	3420-1 1/4	429 (500-1 1/4)		
<b>CIRCLING</b>	3480-1	489 (500-1)	3560-1 1/2	3620-2		
			569 (600-1 1/2)	629 (700-2)		

NC-2, 16 APR 2026 to 14 MAY 2026

NC-2, 16 APR 2026 to 14 MAY 2026