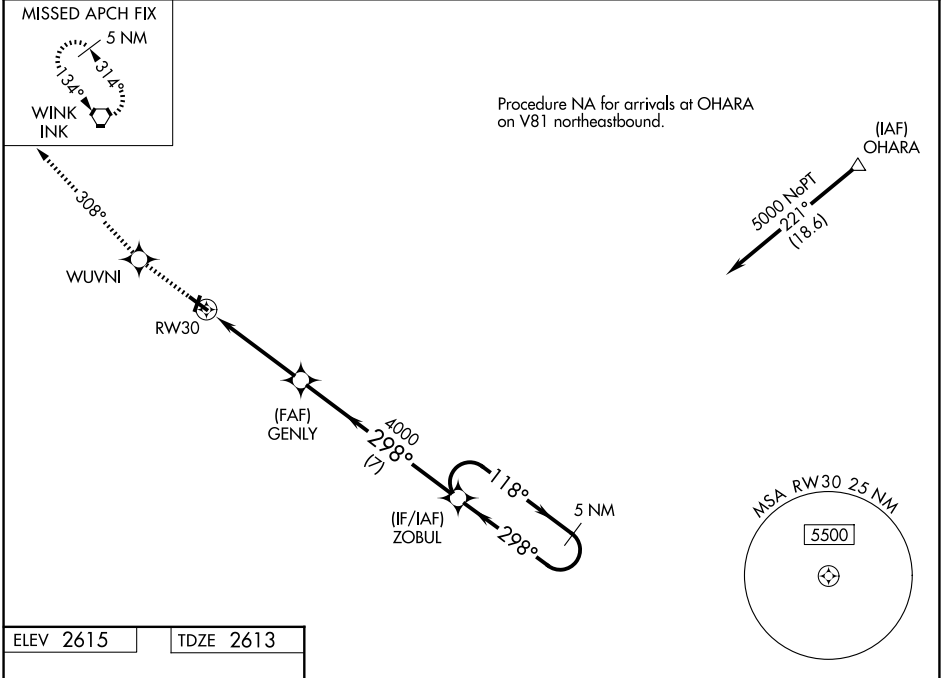


| | | |
|--|------------------------|---|
| WAAS CH 78027 W30A | APP CRS 298° | Rwy Ldg TDZE 2613 Apt Elev 2615 |
|--|------------------------|---|

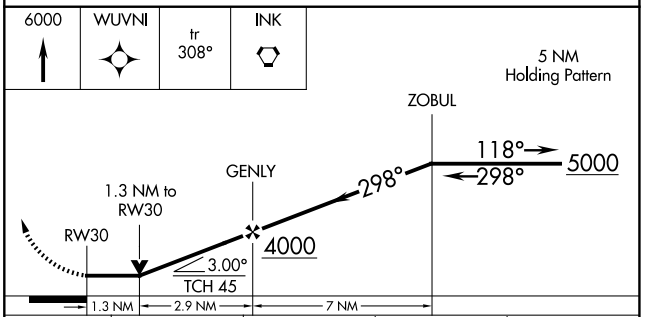
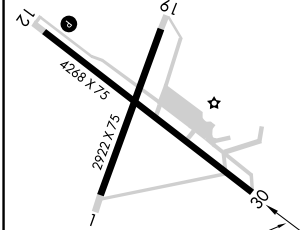
RNAV (GPS) RWY 30

ROY HURD MEML (E01)

| | | |
|--|--|--|
| RNP APCH GPS | | MISSED APPROACH: Climb to 6000 direct WUVNI and on track 308 to INK VORTAC and hold. |
| <p>▼ When local altimeter setting not received, use INK altimeter setting and increase all MDAs 80 feet and LNAV visibility Cat C ¼ SM, and LP visibility Cat C ¼ SM, and Circling visibility Cat C ½ SM. Rwy 30 helicopter visibility reduction below ¾ SM NA. VDP NA when using INK altimeter setting. Circling Rwy 1, 12, 19 NA at night.</p> | | |
| AWOS-3PT 118.225 | FORT WORTH CENTER 133.1 298.95 | UNICOM 122.8 (CTAF) 0 |



| | |
|-----------|-----------|
| ELEV 2615 | TDZE 2613 |
|-----------|-----------|



| CATEGORY | A | B | C | D |
|----------|--------|-------------|--|----|
| LP MDA | 3080-1 | 467 (500-1) | 3080-1 ³ / ₈ 467 (500-1 ³ / ₈) | NA |
| LNAV MDA | 3100-1 | 487 (500-1) | 3100-1 ³ / ₈ 487 (500-1 ³ / ₈) | NA |
| CIRCLING | 3280-1 | 665 (700-1) | 3280-1 ³ / ₄ 665 (700-1 ³ / ₄) | NA |

SC-3, 16 APR 2026 to 14 MAY 2026

SC-3, 16 APR 2026 to 14 MAY 2026