

VORTAC INK <b>112.1</b> Chan 58	APP CRS <b>125°</b>	Rwy Ldg TDZE Apt Elev	<b>4268</b> <b>2609</b> <b>2615</b>
---------------------------------------	------------------------	-----------------------------	---

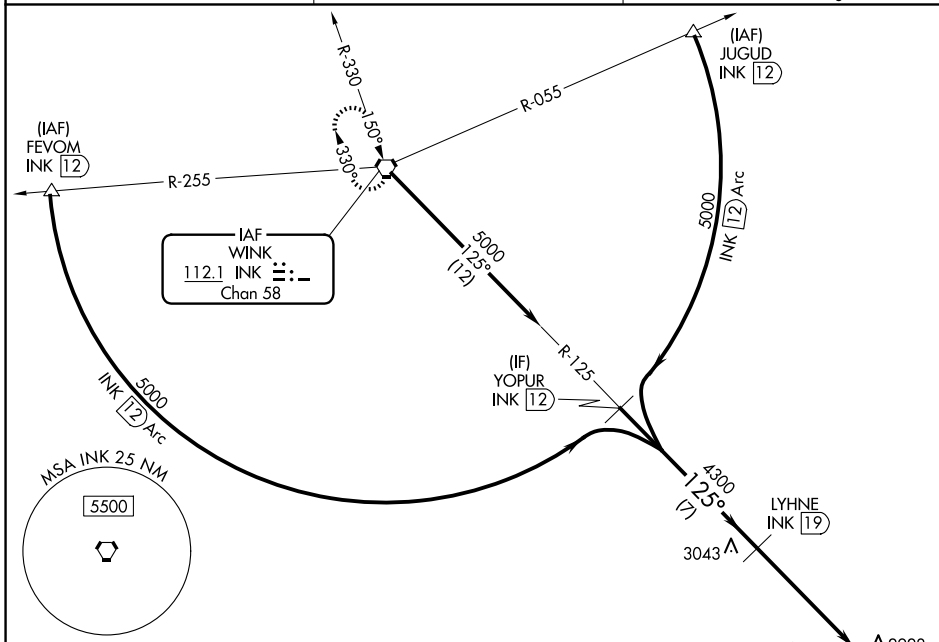
# VOR/DME RWY 12

ROY HURD MEML (E01)

- ⚠ When local altimeter setting not received, use INK altimeter setting and increase all MDAs 80 feet and S-12 visibility Cat C ½ SM, and Circling visibility Cat C ½ SM.
- ⚠ Straight-in Rwy 12 NA at night, Circling Rwy 1, 12, 19 NA at night.
- Rwy 12 helicopter visibility reduction below 1 SM NA.

MISSED APPROACH: Climbing right turn to 5000 direct INK VORTAC and hold.

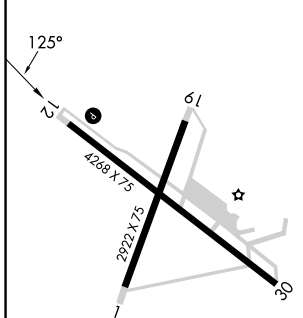
AWOS-3PT <b>118.225</b>	FORT WORTH CENTER <b>133.1 298.95</b>	UNICOM <b>122.8 (CTAF) 1</b>
----------------------------	--	---------------------------------



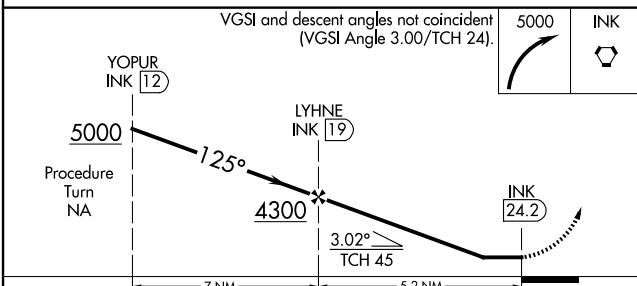
SC-3, 16 APR 2026 to 14 MAY 2026

SC-3, 16 APR 2026 to 14 MAY 2026

ELEV 2615	TDZE 2609
-----------	-----------



MIRL Rwy 1-19 and 12-30 1
---------------------------



CATEGORY	A	B	C	D
S-12	3340-1 731 (800-1)	3340-1¼ 731 (800-1¼)	3340-2 731 (800-2)	NA
CIRCLING	3340-1 725 (800-1)	3340-1¼ 725 (800-1¼)	3340-2 725 (800-2)	NA