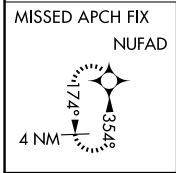
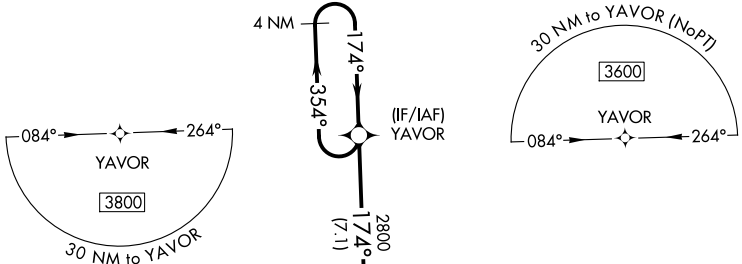


WAAS CH 81923 W18A	APP CRS 174°	Rwy Ldg 5001 TDZE 1177 Apt Elev 1193
--	------------------------	---

RNAV (GPS) RWY 18

SUNDANCE (HSD)

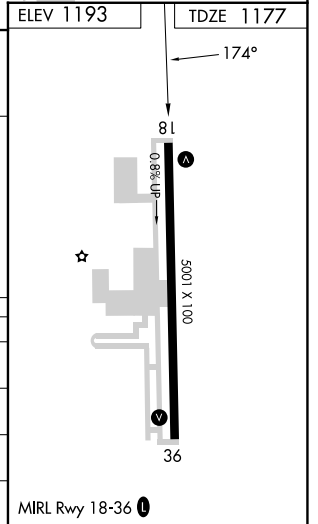
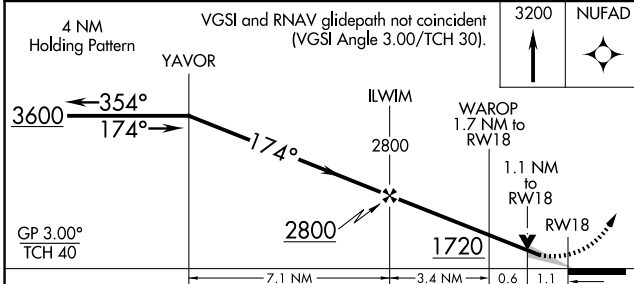
RNP APCH - GPS.			MISSED APPROACH: Climb to 3200 direct NUFAD and hold.
For uncompensated Baro-VNAV systems, LNAV/VNAV NA below -17°C or above 54°C. Baro-VNAV and VDP NA when using PWA altimeter setting.			
AWOS-3 120.975	OKE CITY APP CON 124.6 266.8	CLNC DEL 123.7	UNICOM 122.7 (CTAF)



2283 Δ

WAROP 1.7 NM to RW18
 RW18 1208 Δ
 1279 \pm Δ
 1538 Δ
 1520 Δ

2758 Δ



CATEGORY	A	B	C	D
LPV DA	1427-1	250 (300-1)		NA
LNAV/VNAV DA	1473-1½	296 (300-1½)		NA
LNAV MDA	1540-1	363 (400-1)	1540-1½ 363 (400-1½)	NA
CIRCLING	1740-1 547 (600-1)	1840-1 647 (700-1)	1840-1¾ 647 (700-1¾)	NA

MIRL Rwy 18-36 \bullet

SC-1, 16 APR 2026 to 14 MAY 2026

SC-1, 16 APR 2026 to 14 MAY 2026