

WAAS CH 93731 W31A	APP CRS 319°	Rwy Ldg 4399 TDZE 1943 Apt Elev 1944
--	------------------------	---

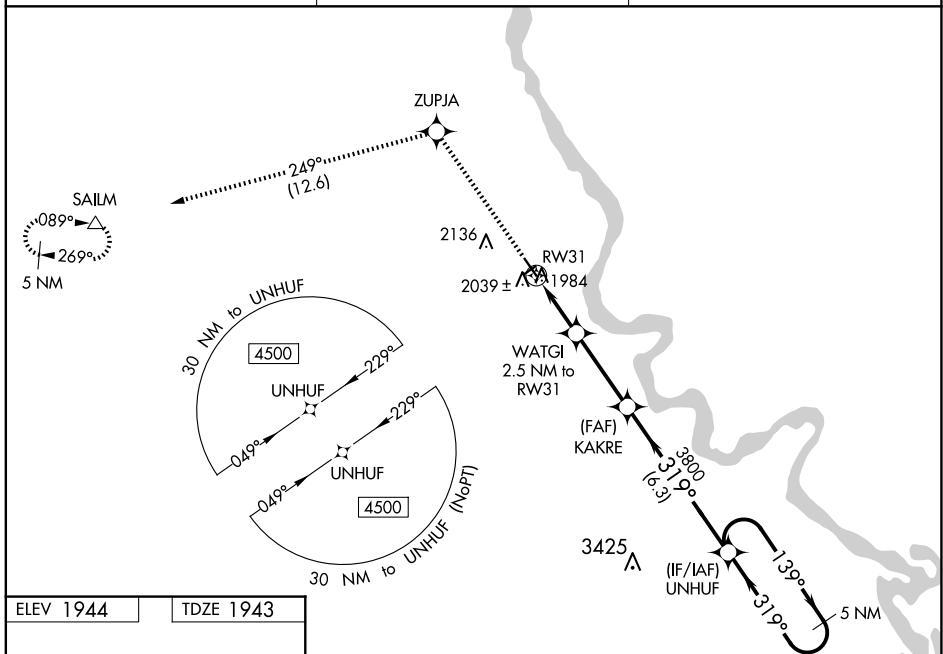
RNAV (GPS) RWY 31

MANDAN RGNL/LAWLER FLD (Y19)

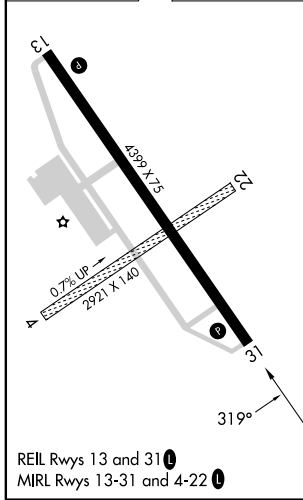
⚠ Baro-VNAV NA when using Bismarck altimeter setting. For uncompensated Baro-VNAV systems, LNAV/VNAV NA below -18°C (0°F) or above 54°C (130°F). DME/DME RNP-0.3 NA. When local altimeter setting not received, use Bismarck altimeter setting and increase all DA 54 feet and LNAV/VNAV all Cats visibility 1/8 mile, increase all MDA 60 feet and LNAV Cat C/D visibility 1/8 mile and Circling Cat D 1/4 mile. Helicopter visibility reduction below 3/4 SM NA. Circling to Rwy's 4 and 22 NA.

ASR MISSED APPROACH: Climb to 4600 direct ZUPJA and on track 249° to SAILM and hold.

AWOS-3 118.225	BISMARCK APP CON * 126.3 298.9	UNICOM 122.8 (CTAF) 0
--------------------------	--	---------------------------------



ELEV 1944	TDZE 1943
-----------	-----------



4600	ZUPJA	tr 249°	SAILM	VGSI and RNAV glidepath not coincident (VGSI Angle 3.00/TCH 25).	UNHUF	5 NM Holding Pattern
*LNAV only.	WATGI 2.5 NM to RW31	KAKRE	3800	319°	4500	GP 3.00° TCH 45
	2780*		3800			
	2.5 NM	3.2 NM	6.3 NM			
CATEGORY	A	B	C	D		
LPV DA		2193-1	250 (300-1)			
LNAV/VNAV DA		2220-1	277 (300-1)			
LNAV MDA		2300-1	357 (400-1)			
C CIRCLING	2360-1 416 (500-1)	2460-1 516 (600-1)	2460-1½ 516 (600-1½)	2560-2 616 (700-2)		