

WAAS CH 82526 W18A	APP CRS 178°	Rwy Idg TDZE Apt Elev	4335 452 452
--	------------------------	-----------------------------	---

RNAV (GPS) RWY 18

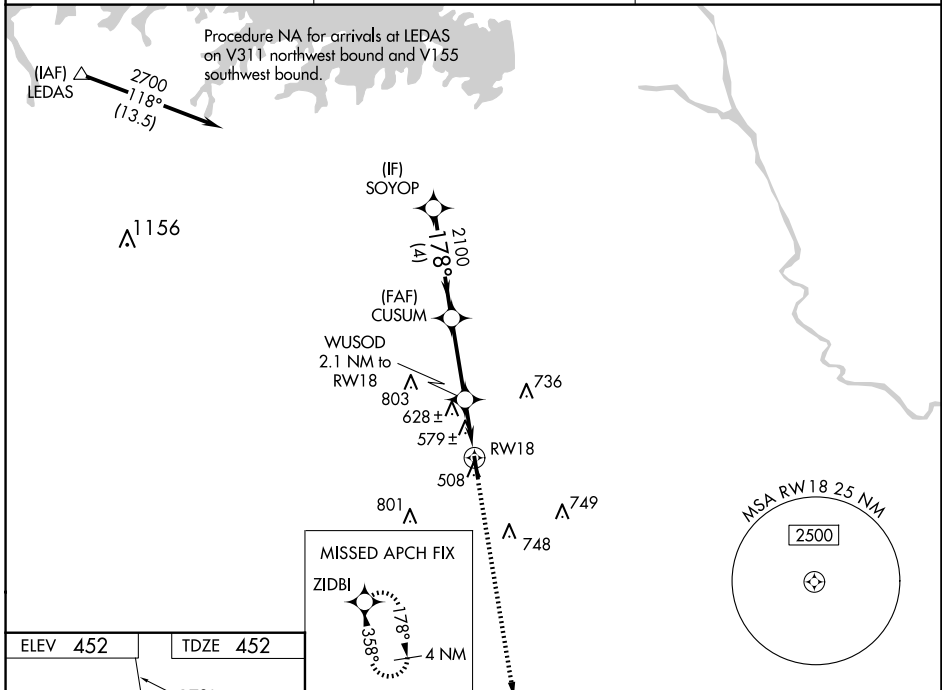
LEXINGTON COUNTY (6J0)

RNP APCH.

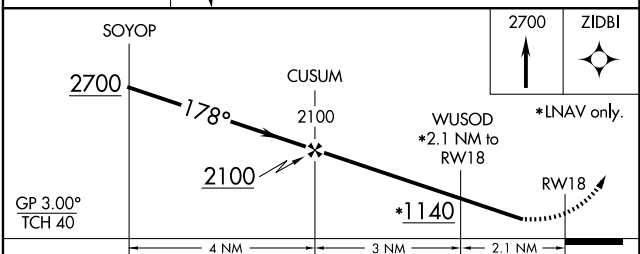
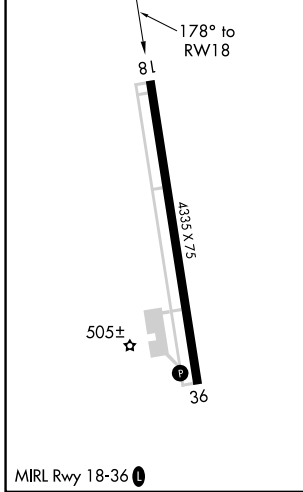
▼ Baro-VNAV NA. Rwy 18 helicopter visibility reduction below $\frac{3}{4}$ SM NA. Use Columbia Metro altimeter setting; when not received use Jim Hamilton L B Owens altimeter setting and increase all DA 19 feet, all MDA 20 feet and increase LPV and LNAV/VNAV all Cats visibility $\frac{1}{8}$ mile.

MISSED APPROACH:
Climb to 2700 direct ZIDBI and hold.

CAE ASOS 120.15	COLUMBIA APP CON 124.15 338.2	UNICOM 123.0 (CTAF) 0
---------------------------	---	---------------------------------



ELEV 452	TDZE 452
----------	----------



CATEGORY	A	B	C	D
LPV DA	757-1	305 (400-1)		NA
LNAV/VNAV DA	797-1 $\frac{1}{8}$	345 (400-1 $\frac{1}{8}$)		NA
LNAV MDA	940-1	488 (500-1)		NA
CIRCLING	980-1 528 (600-1)	1060-1 608 (700-1)		NA

SE-2, 16 APR 2026 to 14 MAY 2026

SE-2, 16 APR 2026 to 14 MAY 2026