

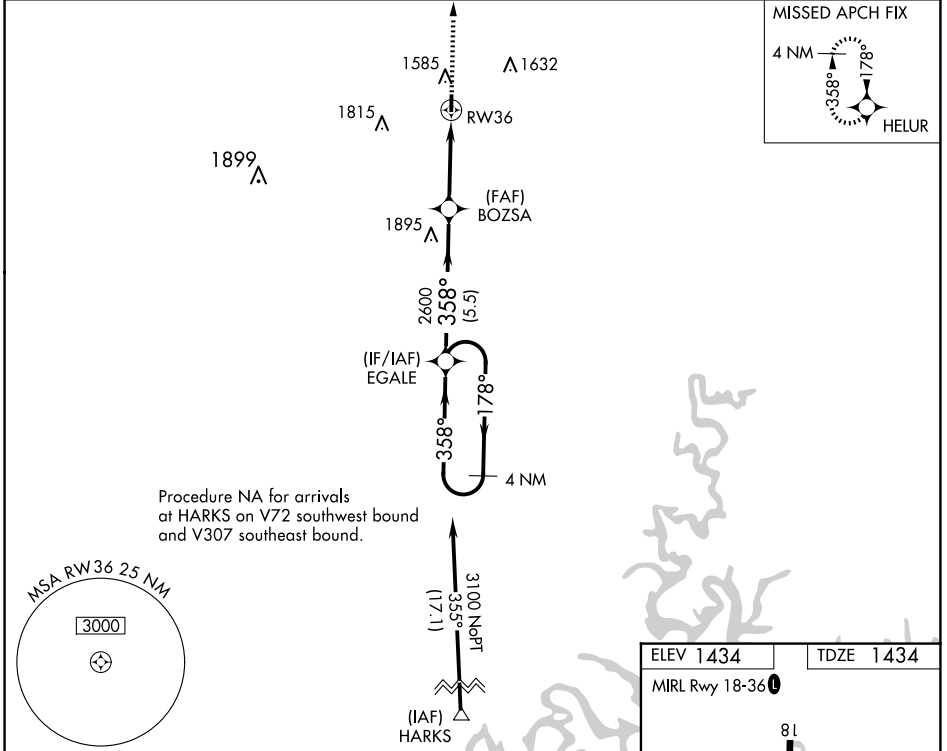
WAAS CH 93726 W36A	APP CRS 358°	Rwy Idg TDZE Apt Elev	3001 1434 1434
--	------------------------	-----------------------------	---

RNAV (GPS) RWY 36

JERRY SUMNERS SR AURORA MUNI (2H2)

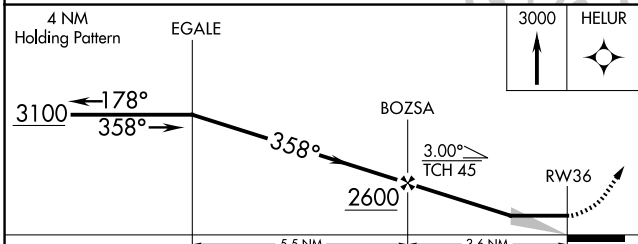
RNP APCH	Use Springfield altimeter setting; when not received, use Branson altimeter setting and increase all MDA 40 feet. Procedure NA at night. Rwy 36 helicopter visibility reduction below 1 SM NA.	MISSED APPROACH: Climb to 3000 direct HELUR and hold.
----------	--	--

SPRINGFIELD APP CON 124.95 318.2	UNICOM 122.8 (CTAF) 0
--	---------------------------------

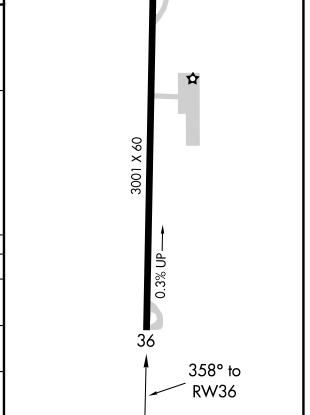


NC-3, 16 APR 2026 to 14 MAY 2026

NC-3, 16 APR 2026 to 14 MAY 2026



ELEV 1434	TDZE 1434
MIRL Rwy 18-36 0	



	4 NM Holding Pattern		EGALE	BOZSA	RWY 36
	3100	178°	358°	2600	3.00 TCH 45
	5.5 NM		3.6 NM		
CATEGORY	A	B	C	D	
LP MDA	2060-1	626 (700-1)		NA	
LNAV MDA	2060-1	626 (700-1)		NA	
CIRCLING	2060-1 626 (700-1)	2080-1 646 (700-1)		NA	