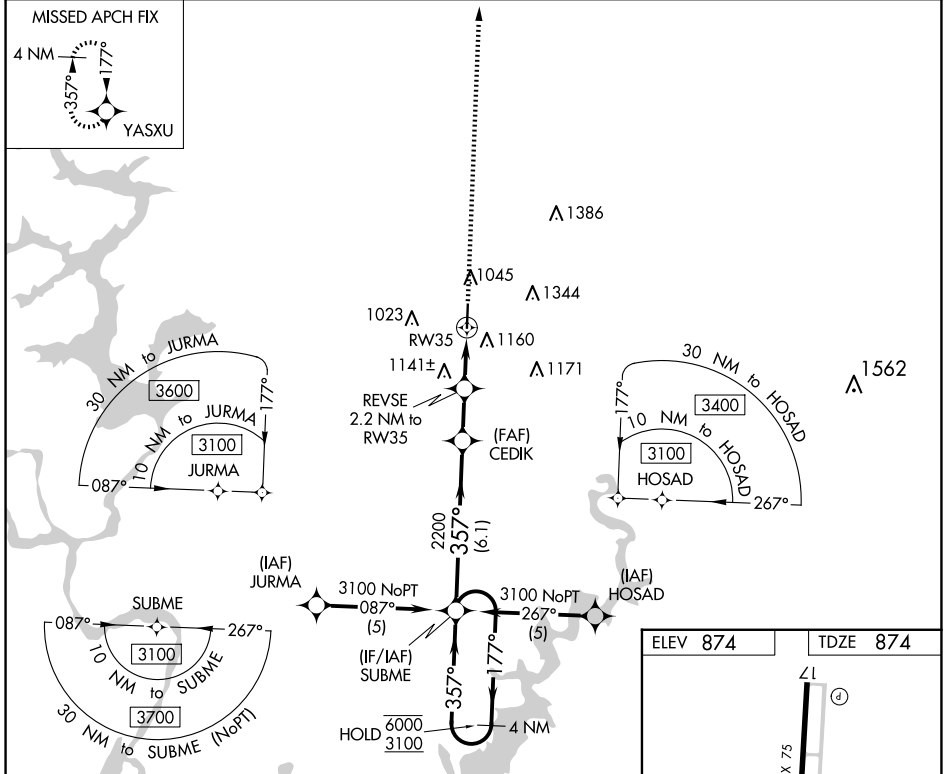


WAAS CH <b>90207</b> <b>W35A</b>	APP CRS <b>357°</b>	Rwy ldg <b>5001</b> TDZE <b>874</b> Apt Elev <b>874</b>
--	------------------------	---

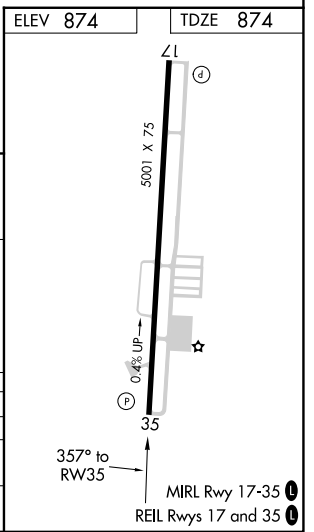
# RNAV (GPS) RWY 35

TAHLEQUAH MUNI (TQH)

RNP APCH.		MISSED APPROACH: Climb to 3000 direct YASXU and hold.
AWOS-3P <b>118.425</b>	MEMPHIS CENTER <b>126.1 269.0</b>	UNICOM <b>122.8 (CTAF) ①</b>



4 NM Holding Pattern	SUBME	3000	YASXU
6000 ← 177°	3100 → 357°	2200	*1580
GP 3.00°	TCH 40	2200	*1580
← 6.1 NM		← 1.9 NM	0.6
← 1.6 NM		← 1.6 NM	
CATEGORY	A	B	C
LPV DA	1124-1	250 (300-1)	NA
RNAV MDA	1400-1	526 (600-1)	1400-1½ 526 (600-1½)
CIRCLING	1520-1	646 (700-1)	1780-2¾ 906 (1000-2¾)



SC-1, 16 APR 2026 to 14 MAY 2026

SC-1, 16 APR 2026 to 14 MAY 2026