

WAAS CH <b>78034</b> <b>W30A</b>	APP CRS <b>304°</b>	Rwy Ldg 5499 TDZE 247 Apt Elev 247
--	------------------------	---

# RNAV (GPS) RWY 30

JOHN BELL WILLIAMS (JVW)

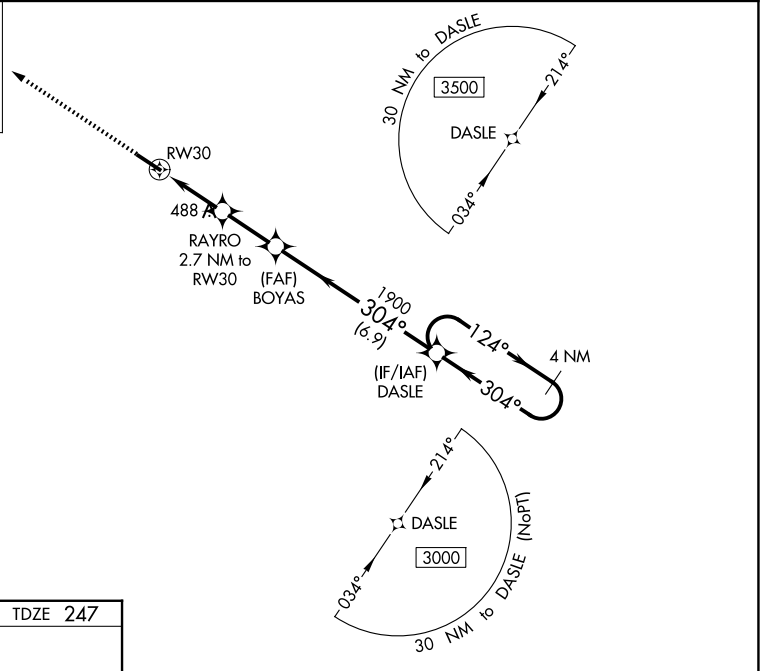
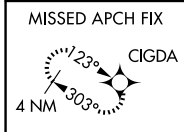
**⚠** For uncompensated Baro-VNAV systems, LNAV/VNAV NA below -15°C (5°F) or above 54°C (130°F). DME/DME RNP-0.3 NA. Circling NA for Cat D southwest of Rwy 12-30. Helicopter visibility reduction below ¼ SM NA. When local altimeter setting not received, use Hawkins Fld altimeter setting increase all DA/MDA 40 feet, increase LPV and LNAV/VNAV all Cats visibility and LNAV Cat C/D visibility ½ mile, increase Circling Cat C visibility ¼ mile. Baro-VNAV and VDP NA when using Hawkins Fld altimeter setting.

**MISSED APPROACH:**  
Climb to 2900 direct CIGDA and hold.

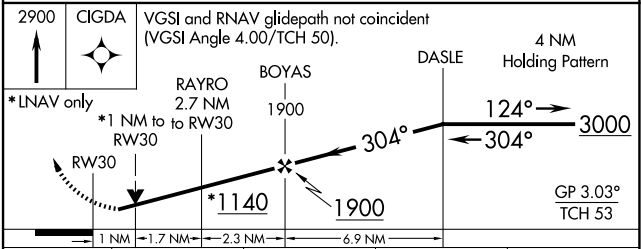
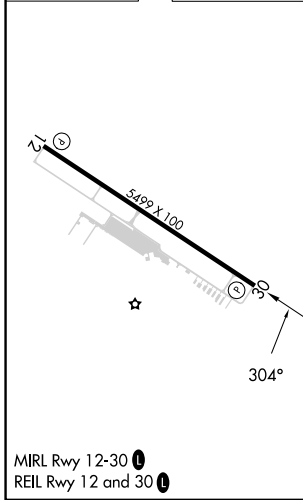
AWOS-3PT  
**118.675**

JACKSON APP CON ★  
**125.25 319.2**

UNICOM  
**123.0 (CTAF) 0**



ELEV 247 TDZE 247



CATEGORY	A	B	C	D
LPV DA		513-7/8	266 (300-7/8)	
LNAV/VNAV DA		699-1 1/2	452 (500-1 1/2)	
LNAV MDA	740-1	493 (500-1)	740-1 3/8	493 (500-1 3/8)
CIRCLING	740-1 493 (500-1)	760-1 513 (600-1)	980-2 733 (800-2)	980-2 1/4 733 (800-2 1/4)

SC-4, 16 APR 2026 to 14 MAY 2026

SC-4, 16 APR 2026 to 14 MAY 2026