

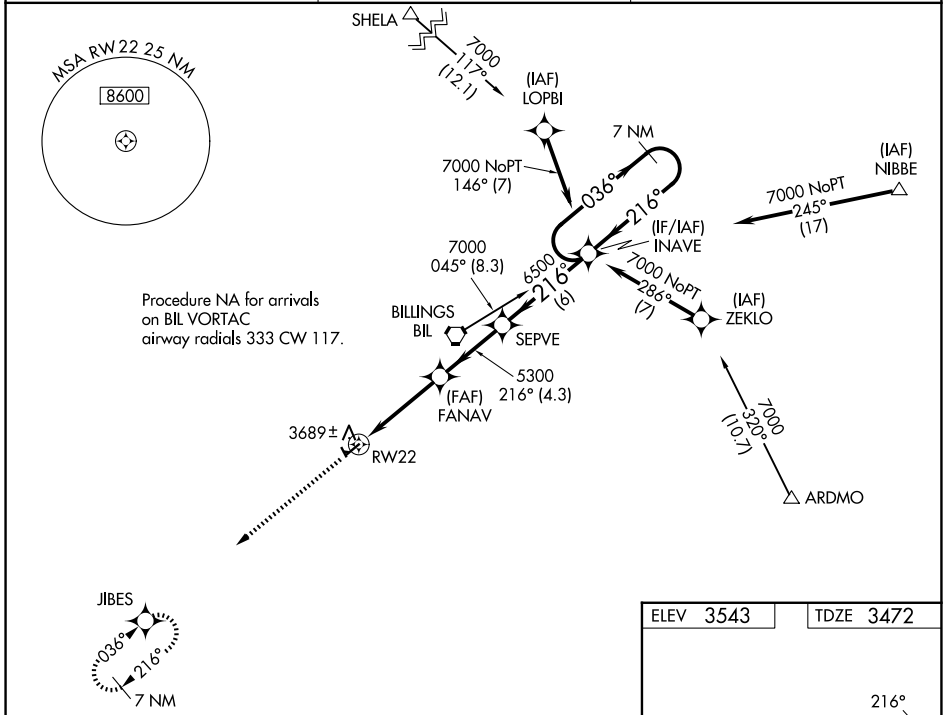
WAAS CH 86822 W22A	APP CRS 216°	Rwy Ldg TDZE Apt Elev	5199 3472 3543
--	------------------------	-----------------------------	---

RNAV (GPS) RWY 22

LAUREL MUNI (6S8)

RNP APCH.	MISSED APPROACH: Climb to 7000 direct JIBES and hold, continue climb-in-hold to 7000.
<p>⚠ For uncompensated Baro-VNAV systems, LNAV/VNAV NA below -21°C or above 53°C. When local altimeter setting not received, use Billings altimeter setting. Baro-VNAV and VDP NA when using Billings altimeter setting. Rwy 22 helicopter visibility reduction below ¼ SM NA.</p>	

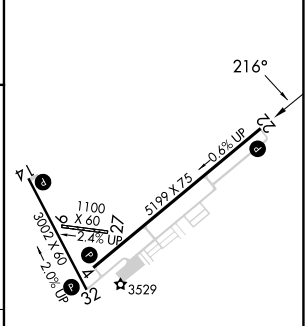
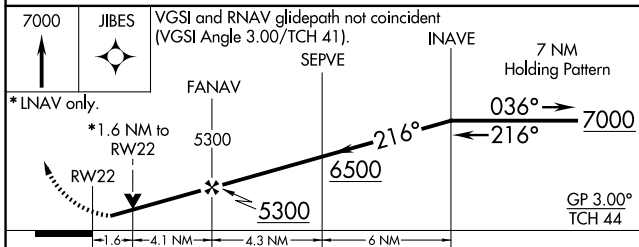
AWOS-3 135.05	BILLINGS APP CON 119.2 120.5 284.6	AUNICOM 123.05 (CTAF) 0
-------------------------	--	-----------------------------------



Procedure NA for arrivals on BIL VORTAC airway radials 333 CW 117.



ELEV 3543	TDZE 3472
-----------	-----------



CATEGORY	A	B	C	D
LPV DA	3767-1		295 (300-1)	
LNAV/VNAV DA	3965-1½		493 (500-1½)	
LNAV MDA	4000-1	528 (500-1)	4000-1½	528 (500-1½)

MIRL Rwy 4-22 and 14-32 0

NW-1, 16 APR 2026 to 14 MAY 2026

NW-1, 16 APR 2026 to 14 MAY 2026