

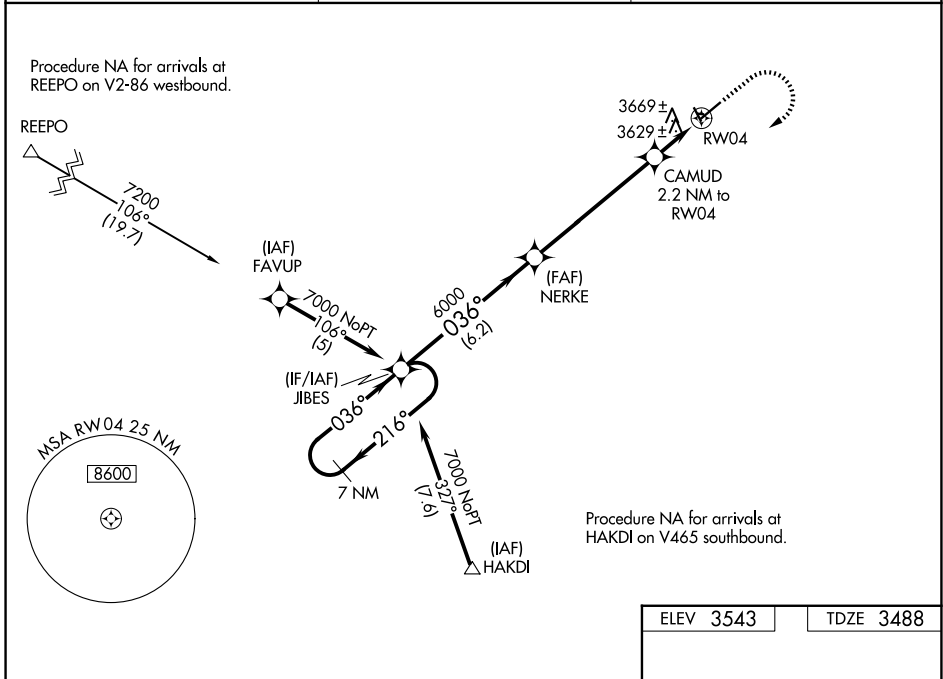
WAAS CH <b>70422</b> W04A	APP CRS <b>036°</b>	Rwy Ldg TDZE <b>3488</b> Apt Elev <b>3543</b>
---------------------------------	------------------------	---

# RNAV (GPS) RWY 4

LAUREL MUNI (6S8)

RNP APCH.	<p><b>⚠</b> For uncompensated Baro-VNAV systems, LNAV/VNAV NA below -21°C or above 54°C. When local altimeter setting not received, use Billings altimeter setting. Baro-VNAV and VDP NA when using Billings altimeter setting. Rwy 4 helicopter visibility reduction below 3/4 SM NA.</p>	<p>MISSED APPROACH: Climb to 4300 then climbing right turn to 7000 direct JIBES and hold.</p>

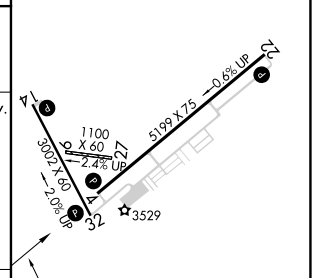
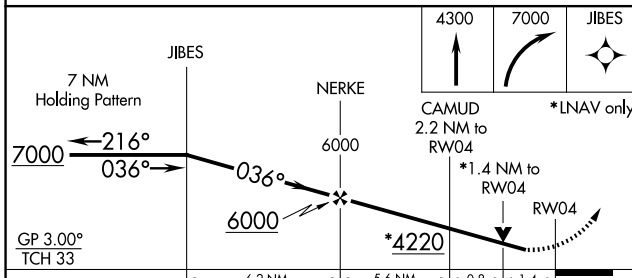
AWOS-3 <b>135.05</b>	BILLINGS APP CON <b>119.2 120.5 284.6</b>	AUNICOM <b>123.05 (CTAF) 0</b>
-------------------------	--	-----------------------------------



NW-1, 16 APR 2026 to 14 MAY 2026

NW-1, 16 APR 2026 to 14 MAY 2026

ELEV 3543	TDZE 3488
-----------	-----------



CATEGORY	A	B	C	D
LPV DA	3783-1 295 (300-1)			
LNAV/VNAV DA	3981-1 <sup>3</sup> / <sub>4</sub> 493 (500-1 <sup>3</sup> / <sub>4</sub> )			
LNAV MDA	3980-1 492 (500-1)	3980-1 <sup>3</sup> / <sub>8</sub> 492 (500-1 <sup>3</sup> / <sub>8</sub> )		

MIRL Rwy 4-22 and 14-32 0
---------------------------