

WAAS CH 63234 W18A	APP CRS 177°	Rwy Ldg TDZE Apt Elev	3914 1152 1153
--	------------------------	-----------------------------	---

RNAV (GPS) RWY 18

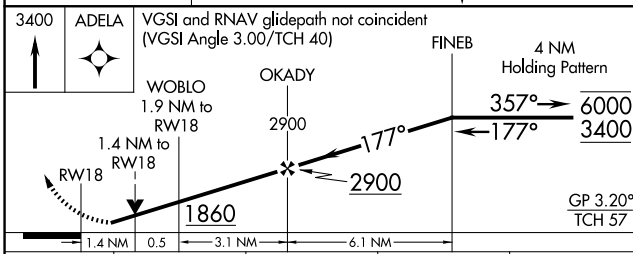
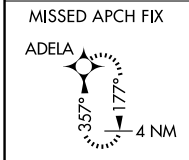
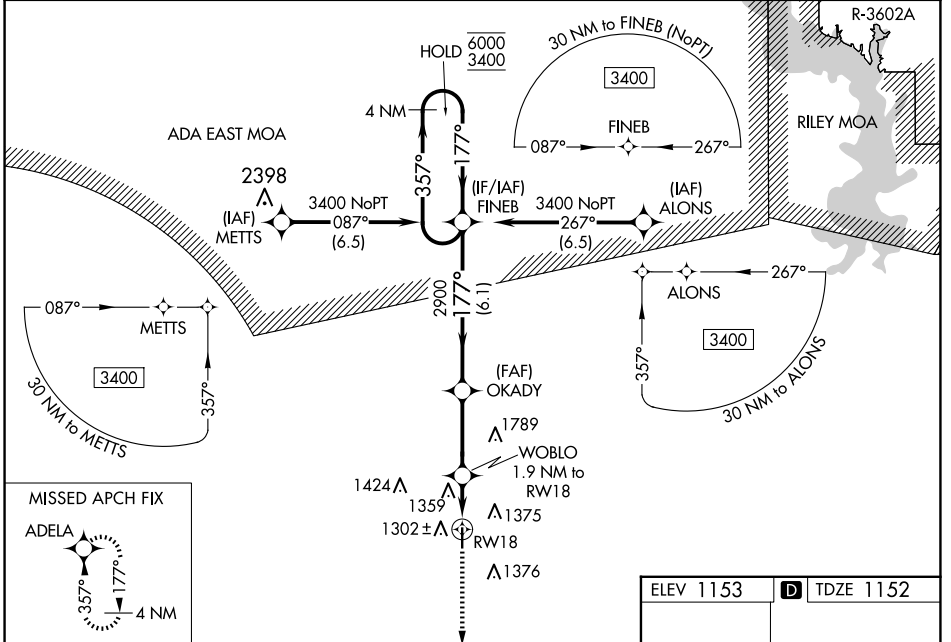
ABILENE MUNI (K78)

RNP APCH - GPS.

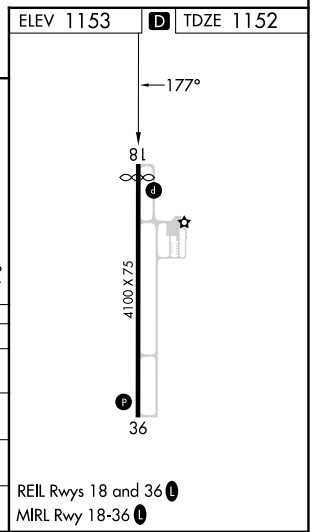
NA Rwy 18 helicopter visibility reduction below 3/4 SM NA. For uncompensated Baro-VNAV systems, LNAV/VNAV NA below -17°C or above 54°C. Baro-VNAV and VDP NA when using SLN altimeter setting. When local altimeter setting not received, use SLN altimeter setting and increase LPV DA to 1565 feet and all visibilities 1/8 SM; increase LNAV/VNAV DA to 1710 feet and all visibilities 1/4 SM; increase all MDAs 80 feet and LNAV visibility Cat C 1/4 SM, and Circling visibility Cat C 1/4 SM.

MISSED APPROACH: Climb to 3400 direct ADELA and hold.

AWOS-3P 124.125	MARSHALL AAF GCA* 121.25 269.05	UNICOM 122.8 (CTAF)
---------------------------	---	-------------------------------



CATEGORY	A	B	C	D
LPV DA	1498-1	346 (400-1)		NA
LNAV/VNAV DA	1643-1 3/8	491 (500-1 3/8)		NA
LNAV MDA	1660-1	508 (600-1)	1660-1 3/8 508 (600-1 3/8)	NA
CIRCLING	1680-1	527 (600-1)	1900-2 1/4 747 (800-2 1/4)	NA



NC-2, 16 APR 2026 to 14 MAY 2026

NC-2, 16 APR 2026 to 14 MAY 2026