

WAAS CH 97734 W36A	APP CRS 357°	Rwy Ldg TDZE Apt Elev	4100 1151 1153
--	------------------------	-----------------------------	---

RNAV (GPS) RWY 36

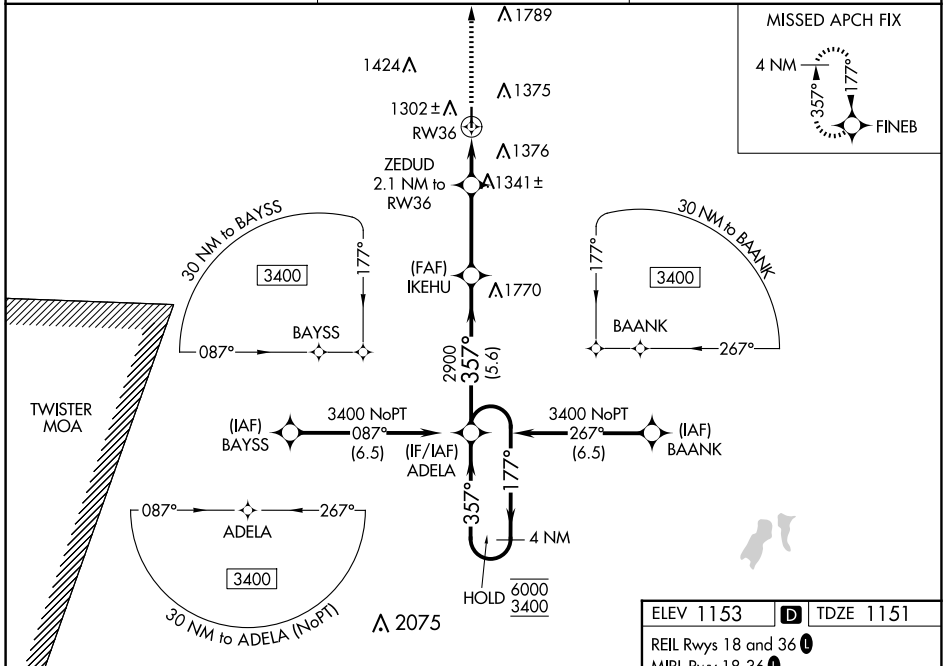
ABILENE MUNI (K78)

RNP APCH - GPS.

NA For uncompensated Baro-VNAV systems, procedure NA below -17°C or above 54°C.
NA Baro-VNAV and VDP NA when using SLN altimeter setting. When local altimeter setting not received, use SLN altimeter setting and increase LPV DA to 1468 feet; increase LNAV/VNAV DA to 1658 feet. Increase LNAV/VNAV all Cats visibility 1/8 SM; increase all MDAs 80 feet and LNAV visibility Cat C 1/8 SM, and Circling visibility Cat C 1/4 SM.

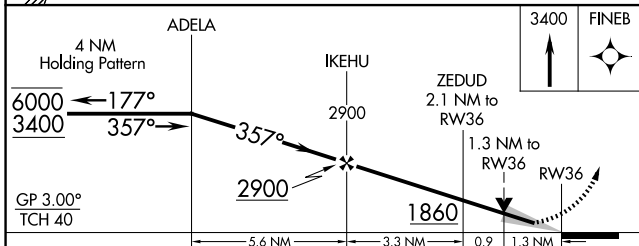
MISSED APPROACH: Climb to 3400 direct FINEB and hold.

AWOS-3P 124.125	MARSHALL AAF GCA* 121.25 269.05	UNICOM 122.8 (CTAF)
---------------------------	---	-------------------------------

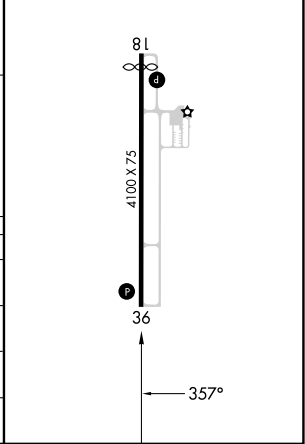


NC-2, 16 APR 2026 to 14 MAY 2026

NC-2, 16 APR 2026 to 14 MAY 2026



ELEV 1153	TDZE 1151
REIL Rwy 18 and 36	MIRL Rwy 18-36



CATEGORY	A	B	C	D
LPV DA	1401-1 250 (300-1)			NA
LNAV/VNAV DA	1600-1 1/4 449 (500-1 1/4)			NA
LNAV MDA	1600-1	449 (500-1)	1600-1 1/4 449 (500-1 1/4)	NA
CIRCLING	1680-1	527 (600-1)	1900-2 1/4 747 (800-2 1/4)	NA