

VORTAC SLN 117.1 Chan 118	APP CRS 087°	Rwy Ldg TDZE Apt Elev N/A N/A 1153
---	------------------------	--

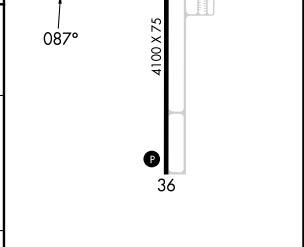
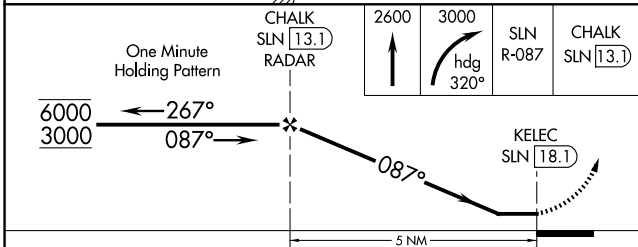
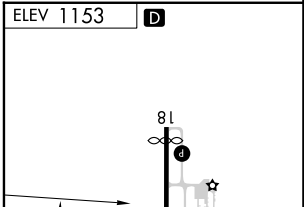
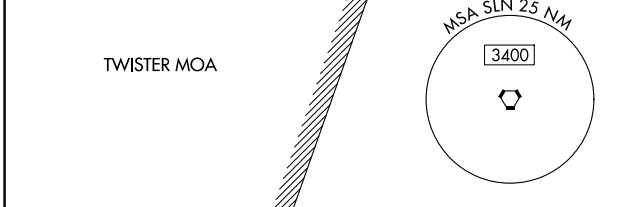
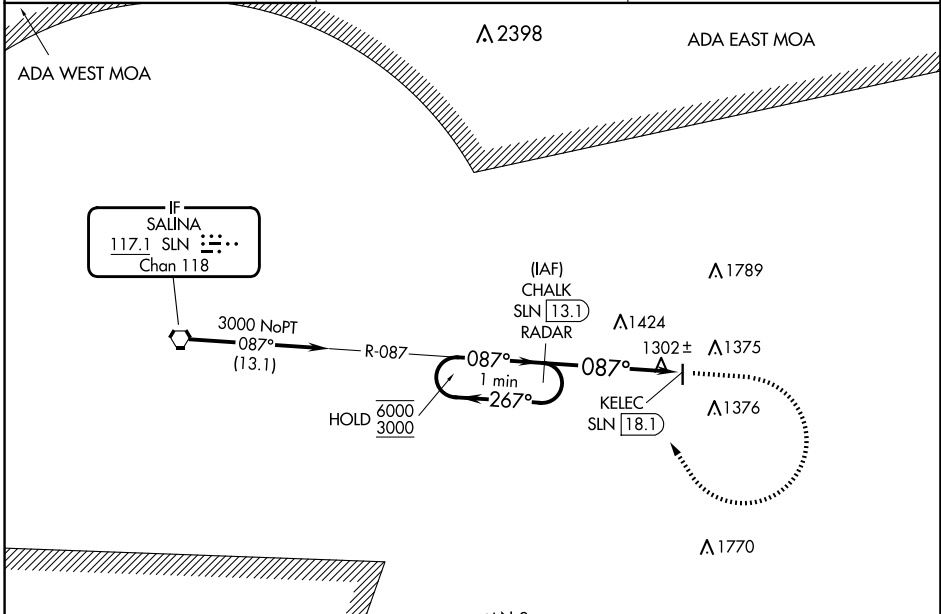
VOR-A
ABILENE MUNI (K78)

DME required. RADAR required for procedure entry at CHALK.

NA When local altimeter setting not received, use SLN altimeter setting and increase all MDAs 80 feet and visibility Cat C ¼ SM.

MISSED APPROACH: Climb to 2600 then climbing right turn to 3000 on heading 320° and SLN VORTAC R-087 to CHALK/13.1 DME/RADAR and hold.

AWOS-3P 124.125	MARSHALL AAF GCA* 121.25 269.05	UNICOM 122.8 (CTAF)
---------------------------	---	-------------------------------



CATEGORY	A	B	C	D
C CIRCLING	1740-1	587 (600-1)	1900-2¼ 747 (800-2¼)	NA

REIL Rwys 18 and 36 **D**
MIRL Rwy 18-36 **D**

NC-2, 16 APR 2026 to 14 MAY 2026

NC-2, 16 APR 2026 to 14 MAY 2026