

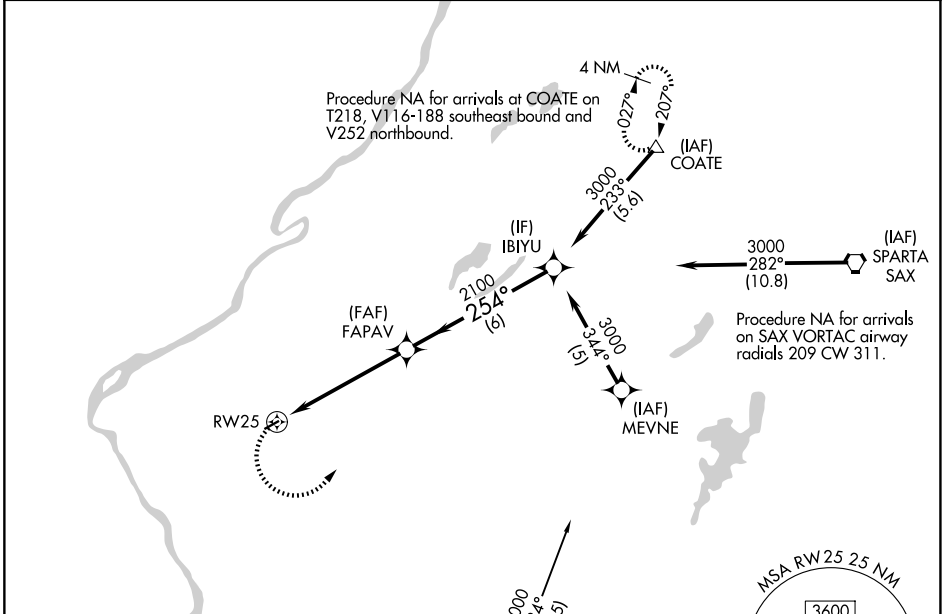
APP CRS <b>254°</b>	Rwy Ldg TDZE Apt Elev	<b>2877</b> <b>371</b> <b>372</b>
------------------------	-----------------------------	---

# RNAV (GPS) RWY 25

BLAIRSTOWN (1N7)

RNP APCH.	<p>Procedure NA at night. Obtain local altimeter setting on CTAF; when not received, use Lehigh Valley Intl altimeter setting. Rwy 25 helicopter visibility reduction below 1 SM NA.</p>	<p>MISSED APPROACH: Climbing left turn to 3000 direct COATE and hold.</p>
<p><b>▽</b> NA</p>		

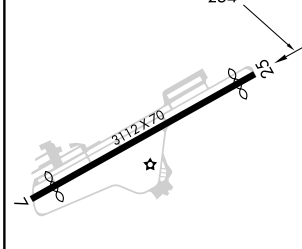
NEWARK APP CON <b>123.775 379.9 (EAST)</b>	ALLENTOWN APP CON <b>124.45 351.8 (WEST)</b>	UNICOM <b>123.0 (CTAF) 0</b>
---	---	---------------------------------



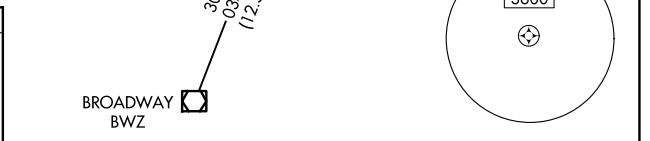
NE-2, 16 APR 2026 to 14 MAY 2026

NE-2, 16 APR 2026 to 14 MAY 2026

ELEV 372	TDZE 371
----------	----------



MIRL Rwy 7-25 0
-----------------



3000	COATE	Visual Segment - Obstacles.	IBIYU
	△		
		FAPAV	3000
		RW25	
		2100	
		5.3 NM	6 NM

CATEGORY	A	B	C	D
LNAV MDA	1260-1¼	889 (900-1¼)		NA
LEHIGH VALLEY INTL ALTIMETER SETTING MINIMUMS				
LNAV MDA	1540-1¼ 1169 (1200-1¼)	1540-1½ 1169 (1200-1½)		NA