

WAAS CH 93806 W31A	APP CRS 307°	Rwy Idg TDZE Apt Elev	6350 231 231
--	------------------------	-----------------------------	---

RNAV (GPS) RWY 31

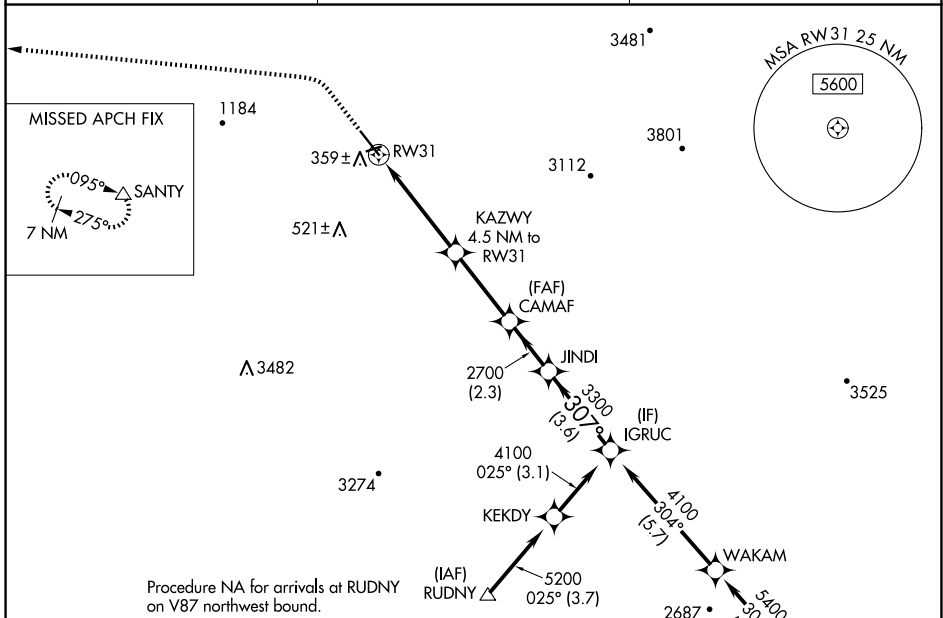
HOLLISTER MUNI (CVH)

RNP APCH - GPS.

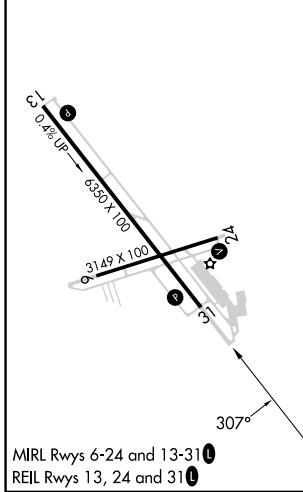
⚠ Rwy 31 helicopter visibility reduction below 3/4 SM NA.
⚠ For uncompensated Baro-VNAV systems, LNAV/VNAV NA below -15°C or above 54°C.

MISSED APPROACH: Climb to 1200, then climbing left turn to 7000 direct SANTY and hold, continue climb-in-hold to 7000.

AWOS-3 120.425	NORCAL APP CON 124.525 348.675	UNICOM 123.0 (CTAF) 0
--------------------------	--	---------------------------------



ELEV 231	TDZE 231
----------	----------



1200	7000	SANTY		
		KAZWY 4.5 NM to RW31	CAMAF 2700	JINDI 3300
2.3 NM		2.2 NM	3.1 NM	2.3 NM
2.3 NM		2.2 NM	3.1 NM	2.3 NM
CATEGORY	A	B	C	D
LPV DA	657-1 1/4 426 (500-1 1/4)			NA
LNAV/VNAV DA	750-1 3/8 519 (600-1 3/8)			NA
LNAV MDA	1000-1 769 (800-1)	1000-1 1/4 769 (800-1 1/4)	1000-2 1/2 769 (800-2 1/2)	NA

SW-2, 16 APR 2026 to 14 MAY 2026

SW-2, 16 APR 2026 to 14 MAY 2026