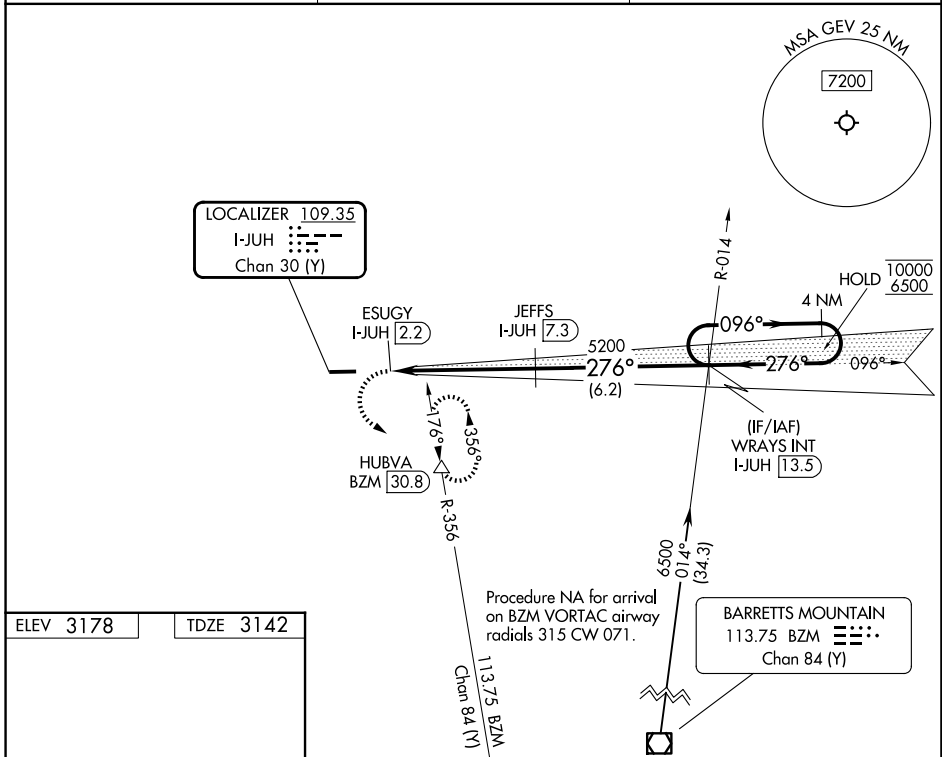


LOC/DME I-JUH 109.35 Chan 30(Y)	APP CRS 276°	Rwy Ldg TDZE Apt Elev 5002 3142 3178
---	------------------------	--

LOC RWY 28
ASHE COUNTY (GEV)

DME required. ▼ Circling to Rwy 10 NA at night. ▲ ❄ -16°C	MISSED APPROACH: Climbing left turn to 7200 on heading 096° and on BZM VOR/DME R-356 to HUBVA/BZM 30.8 DME and hold, continue climb-in-hold to 7200.
--	--

AWOS-3 120.675	ATLANTA CENTER 125.15 263.0	UNICOM 122.8 (CTAF) 0
--------------------------	---------------------------------------	---------------------------------



ELEV 3178	TDZE 3142
REIL Rwy 28 0 MIRL Rwy 10-28 0	

7200	BZM R-356	HUBVA	WRAYS INT I-JUH [13.5]	4 NM Holding Pattern
hdg 096°	ESUGY I-JUH [2.2]	JEFFS I-JUH [7.3]	5200	10000 / 6500
1.3	1.3 NM	3.9 NM	6.2 NM	
CATEGORY	A	B	C	D
S-LOC 28	3980-1½	838 (900-1½)	3980-2½	838 (900-2½)
CIRCLING	4280-1½	1102 (1200-1½)	5140-3 1962 (2000-3)	5180-3 2002 (2100-3)

SE-2, 16 APR 2026 to 14 MAY 2026

SE-2, 16 APR 2026 to 14 MAY 2026