

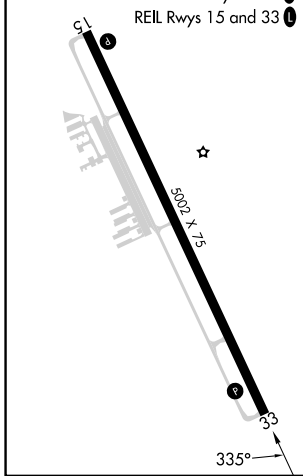
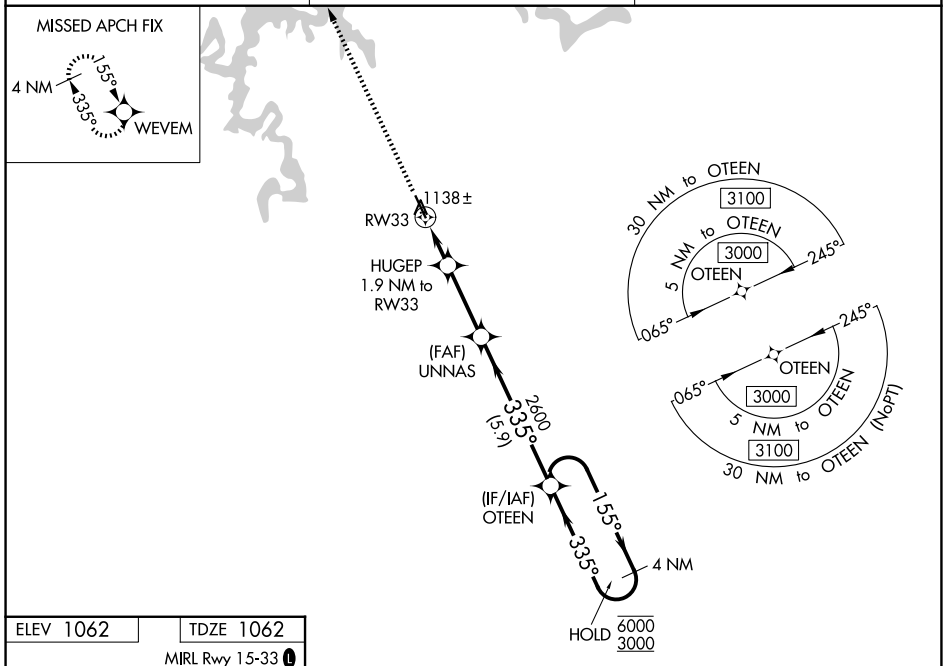
WAAS CH <b>97419</b> <b>W33A</b>	APP CRS <b>335°</b>	Rwy Ldg TDZE Apt Elev	<b>5002</b> <b>1062</b> <b>1062</b>
--	------------------------	-----------------------------	---

# RNAV (GPS) RWY 33

CAMDENTON MEML-LAKE RGNL (OZS)

RNP APCH - GPS.	MISSED APPROACH: Climb to 3000 direct WEVEM and hold.
<p><b>⚠</b> Rwy 33 helicopter visibility reduction below ¼ SM NA. For uncompensated Baro-VNAV systems, LNAV/VNAV NA below -17°C or above 54°C.</p>	

AWOS-3PT <b>120,225</b>	MIZZU APP CON <b>124.1 353.925</b>	UNICOM <b>122.8 (CTAF) 0</b>
----------------------------	---------------------------------------	---------------------------------



ELEV 1062	TDZE 1062	3000	WEVEM	UNNAS	OTEEN	4 NM Holding Pattern
MIRL Rwy 15-33	REIL Rwys 15 and 33	HUGEP 1.9 NM to RW33	UNNAS 2600	OTEEN 3000	OTEEN 3100	4 NM Holding Pattern
		1 NM to RW33	UNNAS 2600	OTEEN 3000	OTEEN 3100	4 NM Holding Pattern
		1700	UNNAS 2600	OTEEN 3000	OTEEN 3100	4 NM Holding Pattern
		1 NM	0.9	2.8 NM	5.9 NM	4 NM
						GP 3.00°
						TCH 42

CATEGORY	A	B	C	D
LPV DA	1312-1	250 (300-1)		NA
LNAV/VNAV DA	1312-1	250 (300-1)		NA
LNAV MDA	1400-1	338 (400-1)		NA
CIRCLING	1520-1	458 (500-1)	1700-1¾ 638 (700-1¾)	NA

NC-3, 16 APR 2026 to 14 MAY 2026

NC-3, 16 APR 2026 to 14 MAY 2026