

WAAS CH <b>45839</b> <b>W32A</b>	APP CRS <b>319°</b>	Rwy Ldg TDZE Apt Elev	<b>5200</b> <b>3430</b> <b>3430</b>
--	------------------------	-----------------------------	---

# RNAV (GPS) RWY 32

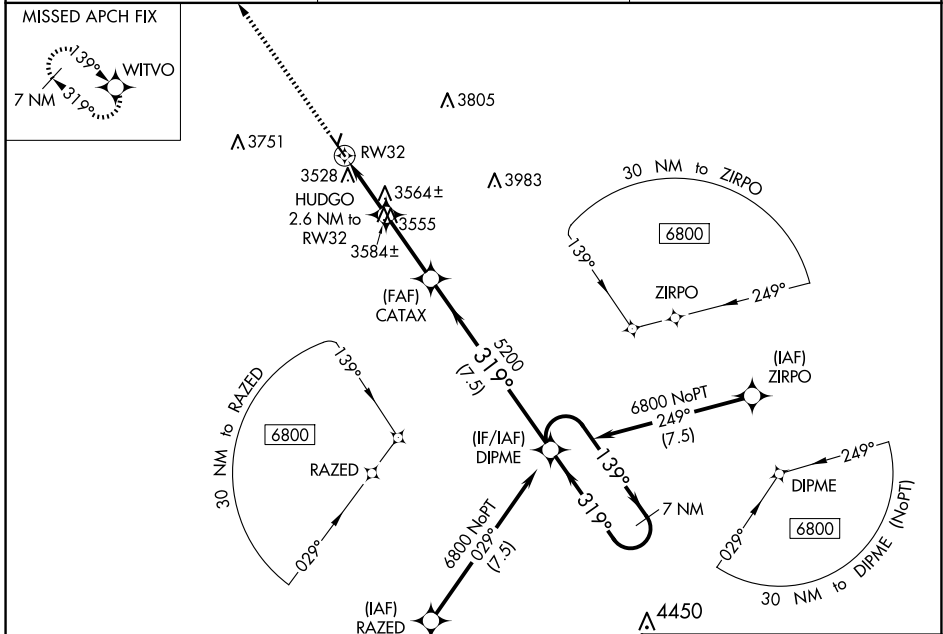
CHEYENNE COUNTY MUNI (SYF)

RNP APCH.

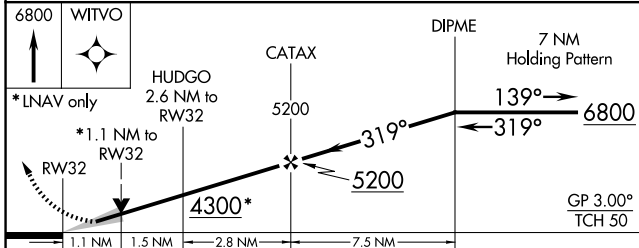
**⚠** Circling NA to Rwy 18 and 36. For uncompensated Baro-VNAV systems, LNAV/VNAV NA below -21°C or above 54°C.

**⚠** MISSED APPROACH: Climb to 6800 direct WITVO and hold, continue climb-in-hold to 6800.

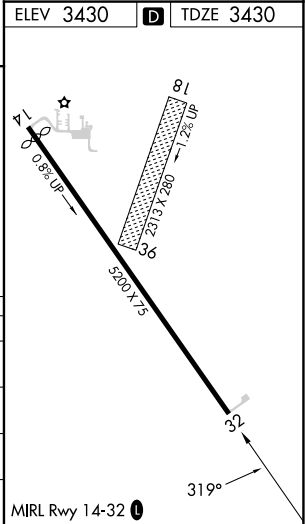
AWOS-3P <b>118.925</b>	DENVER CENTER <b>132.7 226.675</b>	UNICOM <b>122.8 (CTAF) 0</b>
---------------------------	---------------------------------------	---------------------------------



ELEV 3430	<b>D</b> TDZE 3430
-----------	--------------------



CATEGORY	A	B	C	D
LPV DA	3680-1 250 (300-1)			NA
LNAV/VNAV DA	3680-1 250 (300-1)			NA
LNAV MDA	3820-1	390 (400-1)	3820-1 1/8 390 (400-1 1/8)	NA
<b>C</b> CIRCLING	3840-1 410 (500-1)	3880-1 450 (500-1)	3900-1 1/2 470 (500-1 1/2)	NA



NC-2, 16 APR 2026 to 14 MAY 2026

NC-2, 16 APR 2026 to 14 MAY 2026