

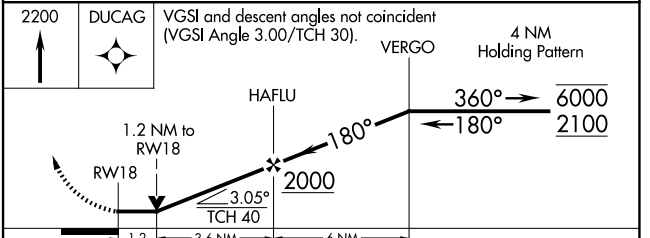
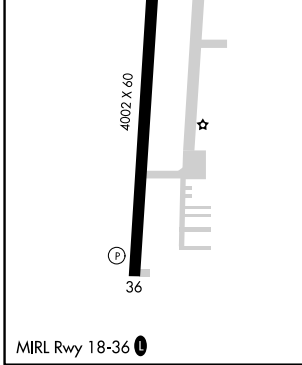
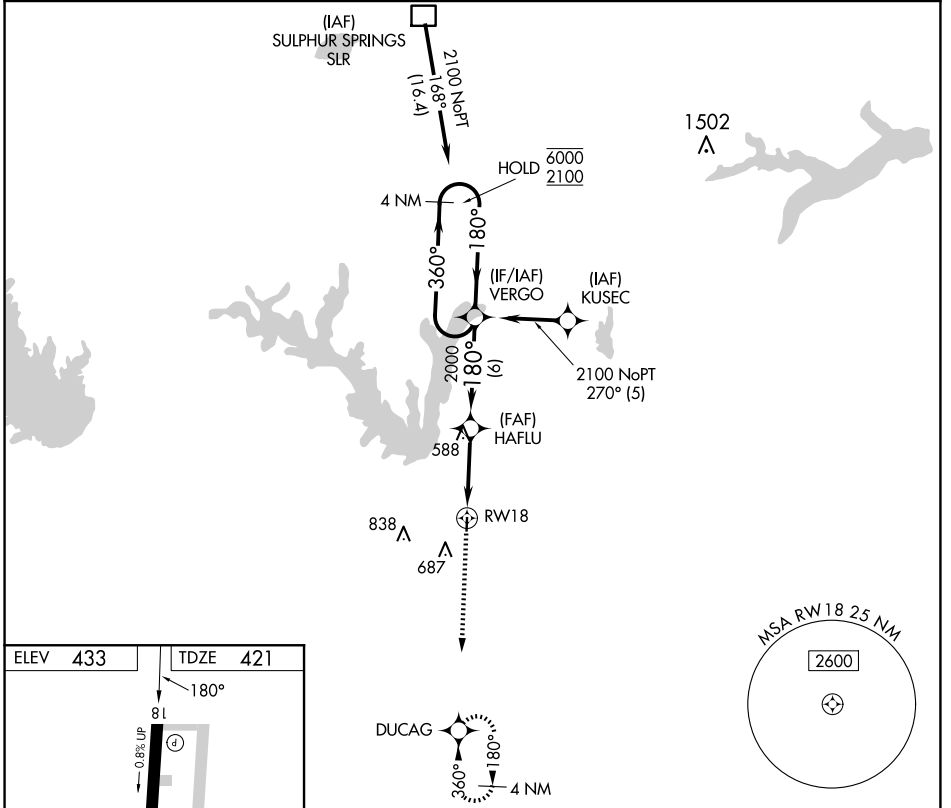
APP CRS	Rwy Idg	4002
180°	TDZE	421
	Apt Elev	433

RNAV (GPS) RWY 18

WOOD COUNTY/COLLINS FLD (JDD)

RNP APCH - GPS.	MISSED APPROACH: Climb to 2200 direct DUCAG and hold.
<p>⚠ Circling Rwy 36 NA at night.</p> <p>⚠ Rwy 18 helicopter visibility reduction below ¾ SM NA.</p>	

AWOS-3 118.9	LONGVIEW APP CON ★ 128.75 379.15	UNICOM 122.8 (CTAF) 0
------------------------	--	---------------------------------



CATEGORY	A	B	C	D
LNAV MDA	820-1	399 (400-1)	820-1½ 399 (400-1½)	NA
CIRCLING	940-1 507 (600-1)	1000-1 567 (600-1)	1000-1½ 567 (600-1½)	NA

SC-2, 16 APR 2026 to 14 MAY 2026

SC-2, 16 APR 2026 to 14 MAY 2026