

APP CRS <b>259°</b>	Rwy Ldg TDZE Apt Elev	<b>3498</b> <b>1047</b> <b>1052</b>
------------------------	-----------------------------	---

# RNAV (GPS) RWY 26

ED NEWLON FLD (I86)

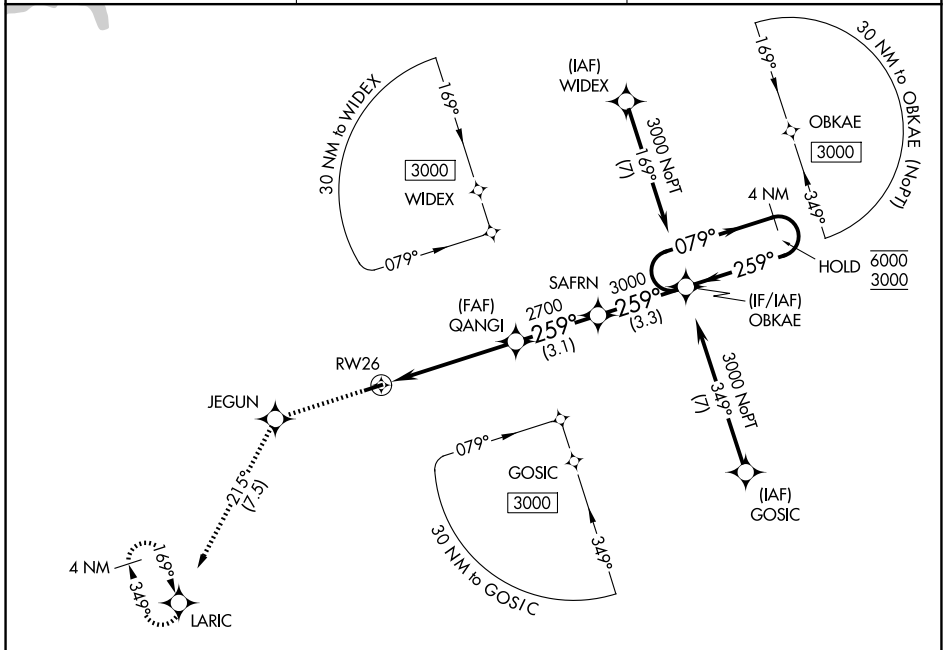
RNP APCH - GPS.

▼ Rwy 26 helicopter visibility reduction below 1 SM NA. Use ZZY altimeter setting; when not received, use LHQ altimeter setting and increase all MDAs 20 feet and LNAV visibility Cat C 1/2 SM. Procedure NA at night.

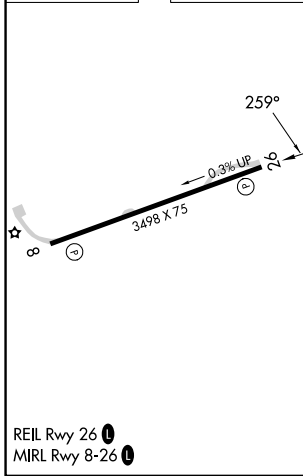
▲ NA

MISSED APPROACH: Climb to 3000 direct JEGUN and on track 215° to LARIC and hold.

ZZY ASOS <b>127.0</b>	INDIANAPOLIS CENTER <b>124.45 323.275</b>	UNICOM <b>122.8 (CTAF) 0</b>
--------------------------	--	---------------------------------



ELEV 1052	TDZE 1047
-----------	-----------



3000	JEGUN	LARIC	VGSI and descent angles not coincident (VGSI Angle 4.00/TCH 28).		4 NM Holding Pattern
↑	tr 215°	☆	SAFRN	OBKAE	
	GANGI		079° →	← 259°	6000 / 3000
	RW26		2700		
	5.1 NM	3.1 NM	3.3 NM		
CATEGORY	A	B	C	D	
LNAV MDA	1580-1	533 (600-1)	1580-1 1/2 533 (600-1 1/2)	NA	
CIRCLING	1580-1	528 (600-1)	1760-2 708 (800-2)	NA	