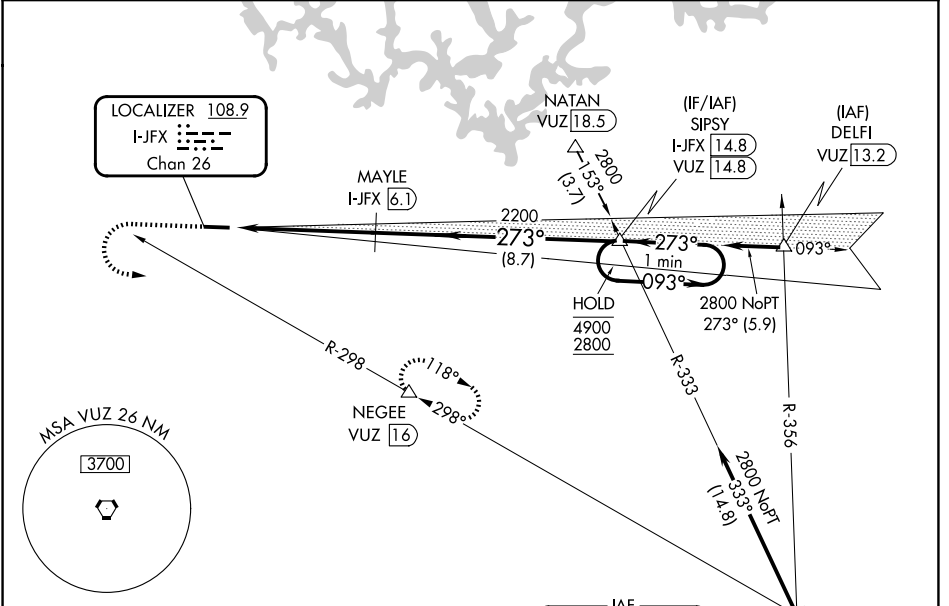


LOC/DME I-JFX <b>108.9</b> Chan 26	APP CRS <b>273°</b>	Rwy Ldg <b>4800</b> TDZE <b>481</b> Apt Elev <b>483</b>
--	------------------------	--

# ILS or LOC RWY 27

WALKER COUNTY/BEVILL FLD (JFX)

DME required.		<p>▼ Rwy 27 helicopter visibility reduction below 3/4 SM NA. VDP NA when using Birmingham altimeter setting. When local altimeter setting not received, use Birmingham altimeter setting; increase DA to 892 feet and S-ILS all Cats visibilities 1/4 SM; increase all MDAs 120 feet and S-LOC Cats C and D and Circling Cats C and D visibility 1/4 SM.</p>		<p>MISSED APPROACH: Climb to 1500 then climbing left turn to 3000 on VUZ VORTAC R-298 to NEGEE/16 DME and hold.</p>	
AWOS-3PT <b>119.225</b>	BIRMINGHAM APP CON <b>127.675 338.2</b>	CLNC DEL <b>121.725</b>	GCO <b>121.725</b>	UNICOM <b>123.075 (CTAF) 0</b>	



ELEV 483	<b>D</b>	TDZE 481
----------	----------	----------

1500	3000	VUZ R-298	NEGEE	MAYLE I-JFX 6.1	SIPSY I-JFX 14.8	One Minute Holding Pattern
*LOC only						
I-JFX 0.8	*I-JFX 2.5	2200	273°	093°	4900	2800
1.6 NM		3.7 NM		8.7 NM		
CATEGORY	A	B	C	D		
S-ILS 27	788-7/8		307 (400-7/8)			
S-LOC 27	1040-1	559 (600-1)		1040-1 1/2 559 (600-1 1/2)		
CIRCLING	1040-1	1080-1	1160-2	1360-2 3/4		
	557 (600-1)	597 (600-1)	677 (700-2)	877 (900-2 3/4)		

MIRL Rwy 9-27  
REIL Rwy 9 and 27

SE-4, 16 APR 2026 to 14 MAY 2026

SE-4, 16 APR 2026 to 14 MAY 2026