

WAAS Ch 49025 W27A	APP CRS 273°	Rwy Ldg 4800 TDZE 481 Apr Elev 483
--	------------------------	---

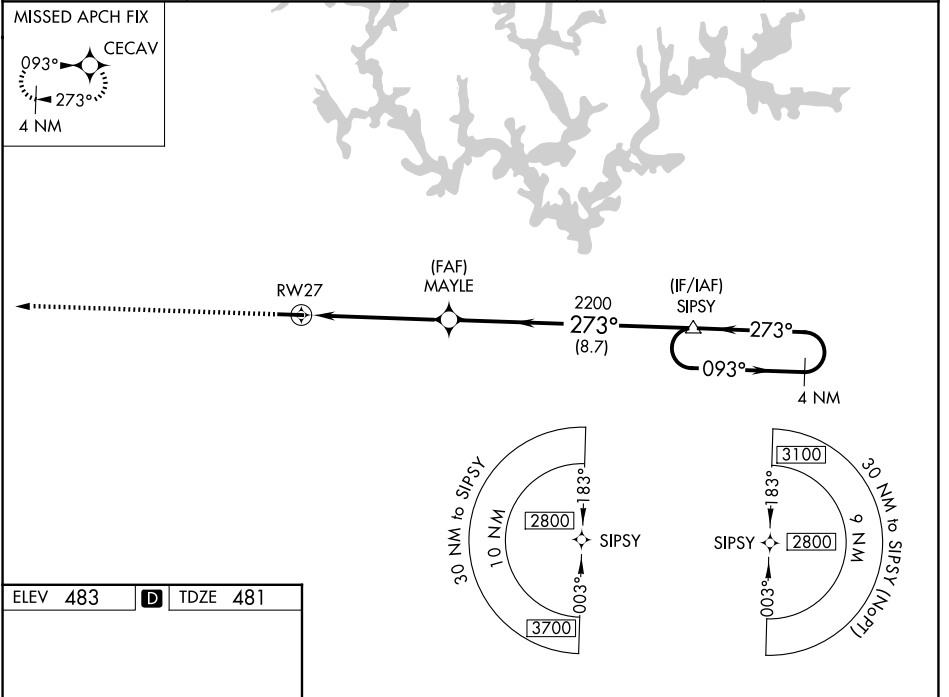
RNAV (GPS) RWY 27

WALKER COUNTY/BEVILL FLD (JF'X)

⚠ Baro-VNAV NA when using Birmingham altimeter setting. For uncompensated Baro-VNAV systems, LNAV/VNAV NA below -15°C (5°F) or above 40°C (104°F). DME/DME RNP-0.3 NA. Helicopter visibility reduction below 3/4 SM NA. VDP NA with Birmingham altimeter setting. When local altimeter setting not received, use Birmingham altimeter setting and increase all DA 104 feet and all MDA 120 feet. Increase LPV all Cats, LNAV/VNAV all Cats, LNAV Cat C/D and Circling Cat C visibility 3/8 mile and Circling Cat D visibility 1/4 mile.

MISSED APPROACH:
Climb to 2800 direct
CECAV and hold.

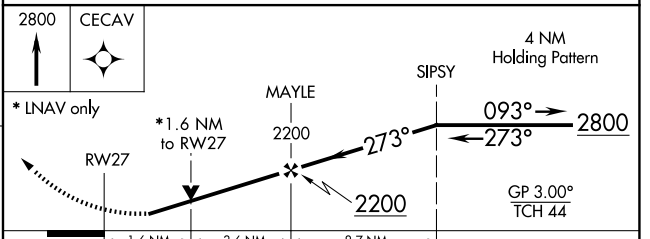
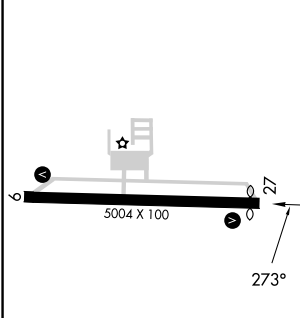
AWOS-3PT 119.225	BIRMINGHAM APP CON 127.675 338.2	CLNC DEL 121.725	GCO 121.725	UNICOM 123.075 (CTAF) ①
----------------------------	--	----------------------------	-----------------------	-----------------------------------



SE-4, 16 APR 2026 to 14 MAY 2026

SE-4, 16 APR 2026 to 14 MAY 2026

ELEV 483	D	TDZE 481
-----------------	----------	-----------------



CATEGORY	A	B	C	D
LPV DA		789-1	308 (300-1)	
LNAV/ DA VNAV		964-1 5/8	483 (500-1 5/8)	
LNAV MDA	1040-1	559 (600-1)	1040-1 5/8	559 (600-1 5/8)
CIRCLING	1040-1 557 (600-1)	1080-1 597 (600-1)	1160-2 677 (700-2)	1360-2 3/4 877 (900-2 3/4)

MIRL Rwy 9-27 ①
REIL Rwy 9 and 27 ①