

APP CRS 239°	Rwy Idg 2998
	TDZE 5
	Apt Elev 5

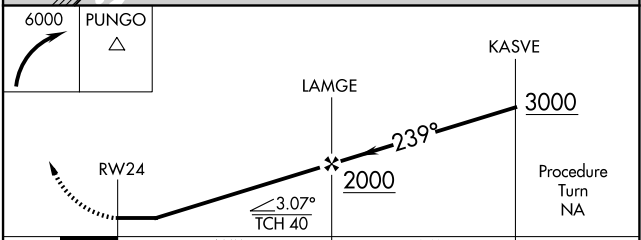
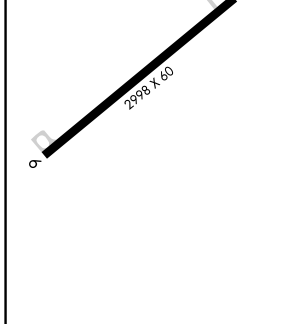
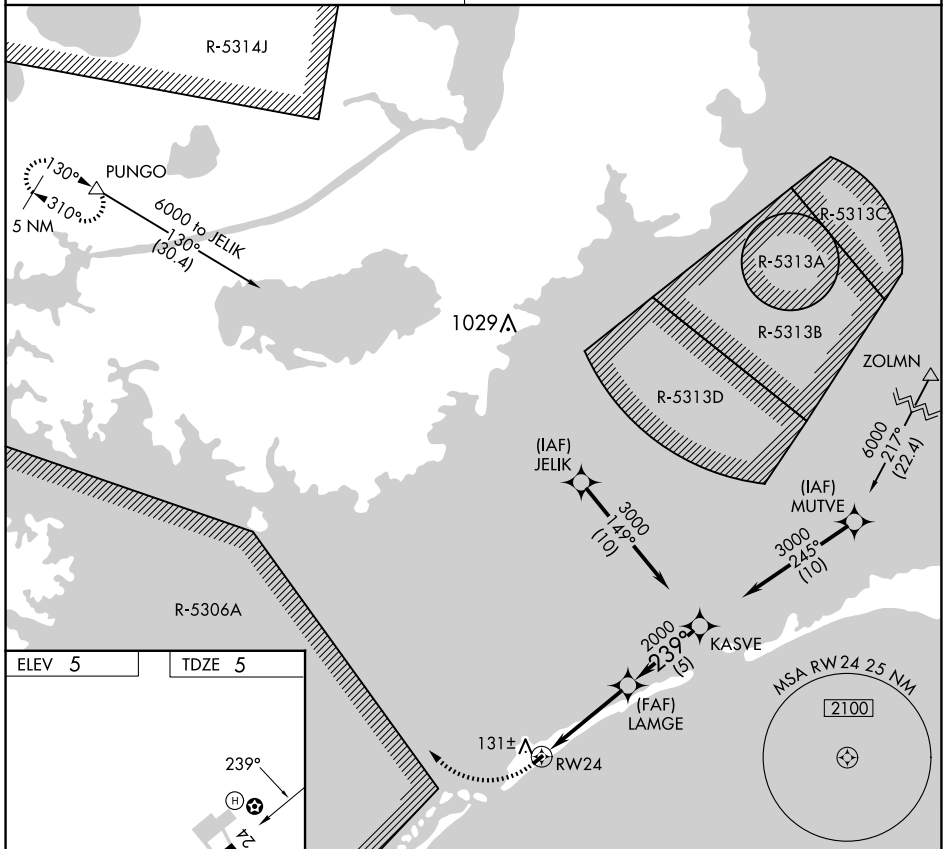
RNAV (GPS) RWY 24

OCRACOKE ISLAND (W95)

▲ NA Procedure NA at night. Use Hatteras altimeter setting, when not received procedure NA. DME/DME RNP-0.3 NA. Helicopter visibility reduction below 1 SM NA.

MISSED APPROACH: Climbing right turn to 6000 direct PUNGO WP and hold.

CHERRY POINT APP CON 119.75 360.775	CTAF 122.9
---	----------------------



CATEGORY	A	B	C	D
LNAV MDA	500-1	495 (500-1)		NA
CIRCLING	560-1	555 (600-1)		NA

SE-2, 16 APR 2026 to 14 MAY 2026

SE-2, 16 APR 2026 to 14 MAY 2026