

VORTAC EMP 112.8 Chan 75	APP CRS 187°	Rwy Idg TDZE Apt Elev	3504 1207 1208
--	------------------------	-----------------------------	---

VOR RWY 18

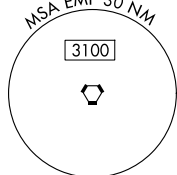
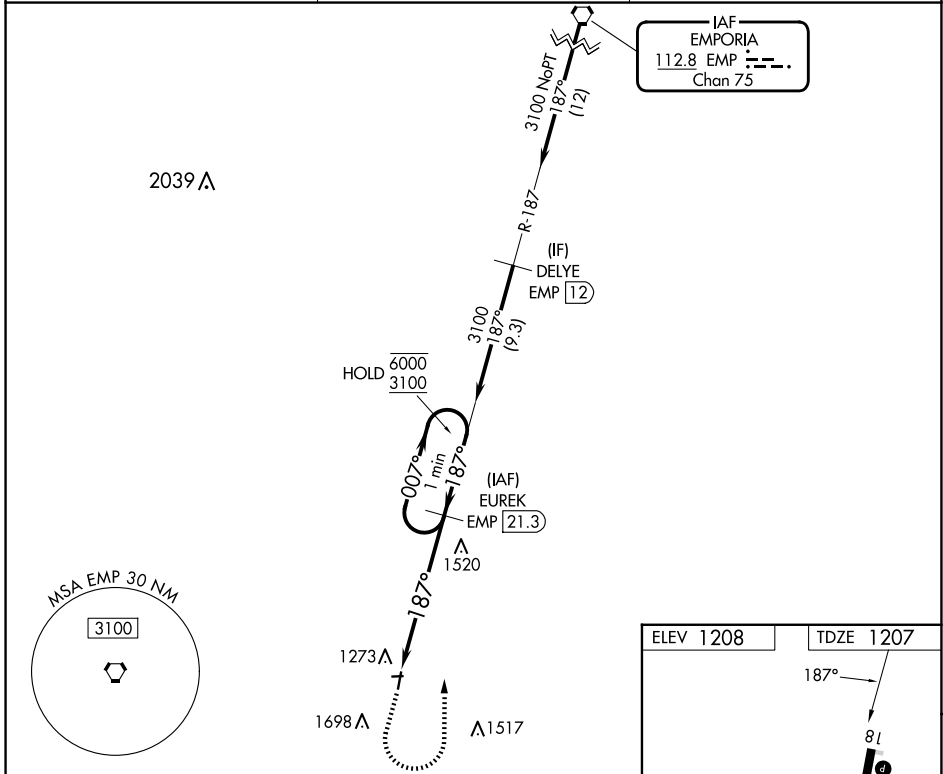
LT WILLIAM M MILLIKEN (13K)

DME required.

⚠ Circling NA to Rwys 8 and 26. When local altimeter setting not received, use Emporia altimeter setting: increase all MDAs 80 feet and S-18 Cat C visibility $\frac{1}{4}$ SM, Circling Cat C visibility $\frac{1}{4}$ SM.

MISSED APPROACH: Climb to 2100 then climbing left turn to 3100 on EMP R-187 to EUREK/21.3 DME and hold.

AWOS-3PT 120.975	KANSAS CITY CENTER 120.2 323.2	UNICOM 122.8 (CTAF) 0
----------------------------	--	---------------------------------



2100 ↑ EMP R-187

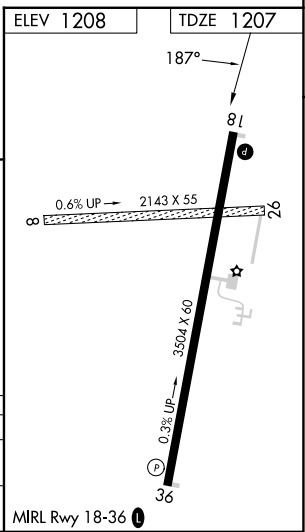
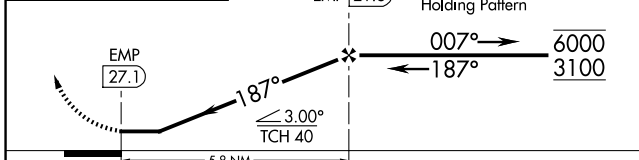
3100 EMP R-187

EUREK EMP 21.3

VGSI and descent angles not coincident (VGSI Angle 3.00/TCH 34).

EUREK EMP 21.3

One Minute Holding Pattern



CATEGORY	A	B	C	D
S-18	1820-1	613 (700-1)	1820-1 $\frac{3}{4}$ 613 (700-1 $\frac{3}{4}$)	NA
CIRCLING	1820-1	612 (700-1)	2060-2 $\frac{1}{2}$ 852 (900-2 $\frac{1}{2}$)	NA

NC-2, 16 APR 2026 to 14 MAY 2026

NC-2, 16 APR 2026 to 14 MAY 2026