

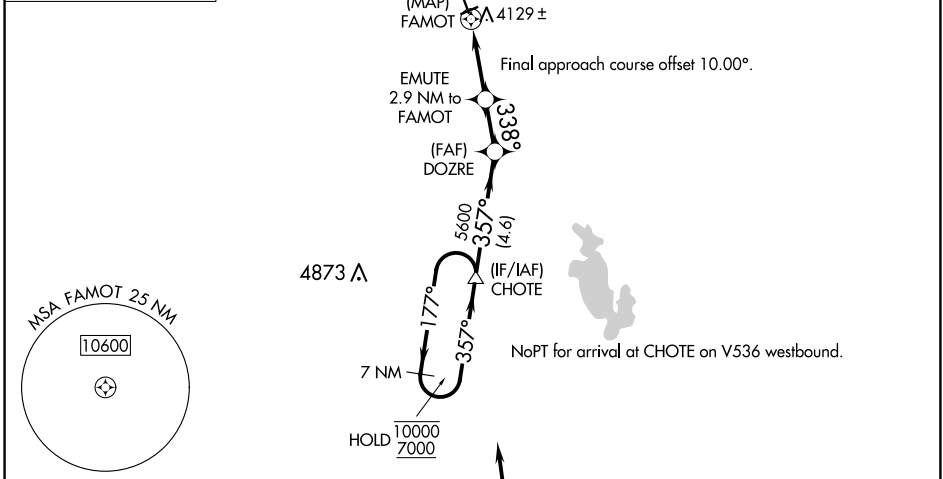
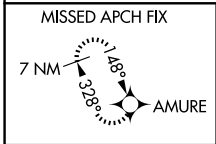
# RNAV (GPS) RWY 33

CHOTEAU (CII)

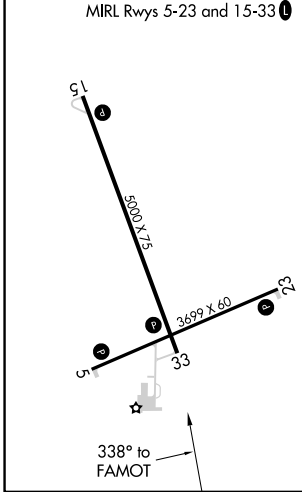
APP CRS <b>338°</b>	Rwy ldg <b>5000</b>
	TDZE <b>3943</b>
	Apt Elev <b>3947</b>

RNP APCH.	MISSED APPROACH: Climb to 6600 direct AMURE and hold.
NA Rwy 33 helicopter visibility reduction below 3/4 SM NA.	

AWOS-2 <b>119.275</b>	SALT LAKE CITY CENTER <b>133.4 285.4</b>	UNICOM <b>122.8 (CTAF) ①</b>
--------------------------	---	---------------------------------



ELEV 3947	TDZE 3943
-----------	-----------



6600 AMURE	VGSI and descent angles not coincident (VGSI Angle 3.00/TCH 25).	CHOTE 7 NM Holding Pattern			
EMUTE 2.9 NM to FAMOT	DOZRE				
1.1 NM to FAMOT	3.00° TCH 45 338° 5000	357° 5600 177° 10000 7000			
FAMOT					
0.2	1.1 NM	1.8 NM	1.9 NM	4.6 NM	

CATEGORY	A	B	C	D
INAV MDA	4380-1	437 (500-1)	4380-1¼	437 (500-1¼)
CIRCLING	4440-1	493 (500-1)	4600-1¾ 653 (700-1¾)	4900-3 953 (1000-3)

NW-1, 16 APR 2026 to 14 MAY 2026

NW-1, 16 APR 2026 to 14 MAY 2026