

WAAS CH 99519 W16A	APP CRS 156°	Rwy Ldg 4701
		TDZE 2384
		Apt Elev 2384

RNAV (GPS) RWY 16

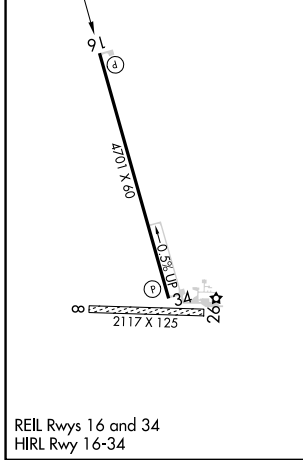
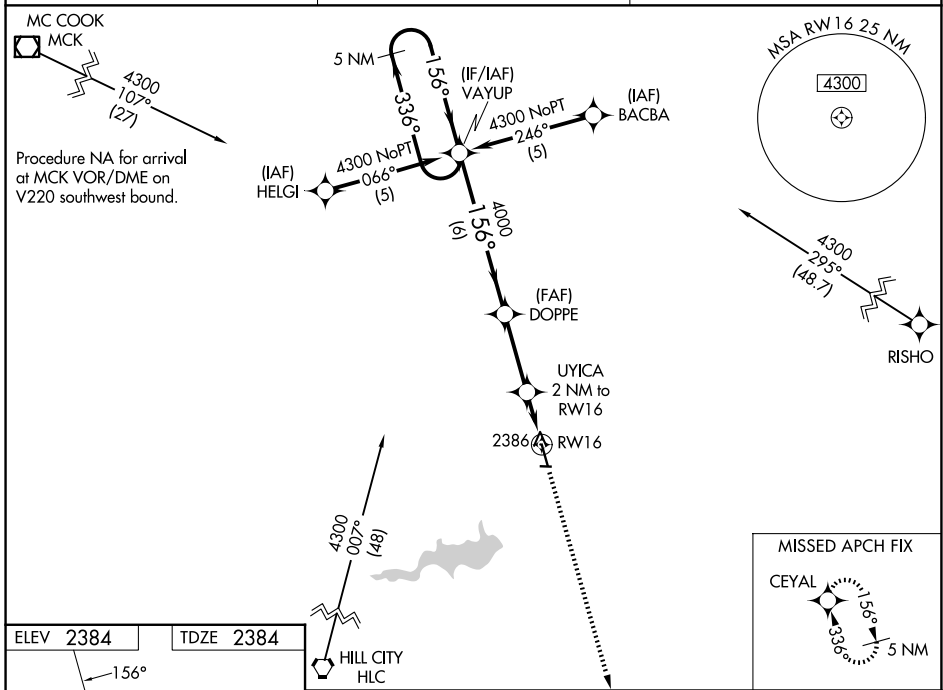
NORTON MUNI (N.R.N)

RNP APCH - GPS.

▼ Baro-VNAV NA when using Hill City Muni altimeter setting. For uncompensated Baro-VNAV systems, LNAV/VNAV NA below -19°C or above 54°C. When local altimeter not received, use Hill City Muni altimeter setting and increase LPV DA to 2720 feet, LNAV/VNAV DA to 2742 feet, all MDA 100 feet, LNAV Cat C visibility ¼ SM, Circling Cat C visibility ½ SM.

MISSED APPROACH: Climb to 4300 direct CEYAL and hold.

AWOS-3PT 118.275	DENVER CENTER 132.7 226.675	CTAF 122.9
----------------------------	---------------------------------------	----------------------



	5 NM Holding Pattern VAYUP	DOPPE	UYICA 2 NM to RWY 16	RWY 16
	4300 ← 336°	4000	3040	
	156° →	156°		
CATEGORY	A	B	C	D
LPV DA		2634-1	250 (300-1)	NA
LNAV/VNAV DA		2656-1	272 (300-1)	NA
LNAV MDA	2840-1	456 (500-1)	2840-1 3/8 456 (500-1 3/8)	NA
CIRCLING	2880-1	496 (500-1)	3100-2 716 (800-2)	NA

NC-2, 16 APR 2026 to 14 MAY 2026

NC-2, 16 APR 2026 to 14 MAY 2026