

APP CRS	Rwy Idg	<b>2880</b>
<b>356°</b>	TDZE	<b>96</b>
	Apt Elev	<b>96</b>

# RNAV (GPS) RWY 36

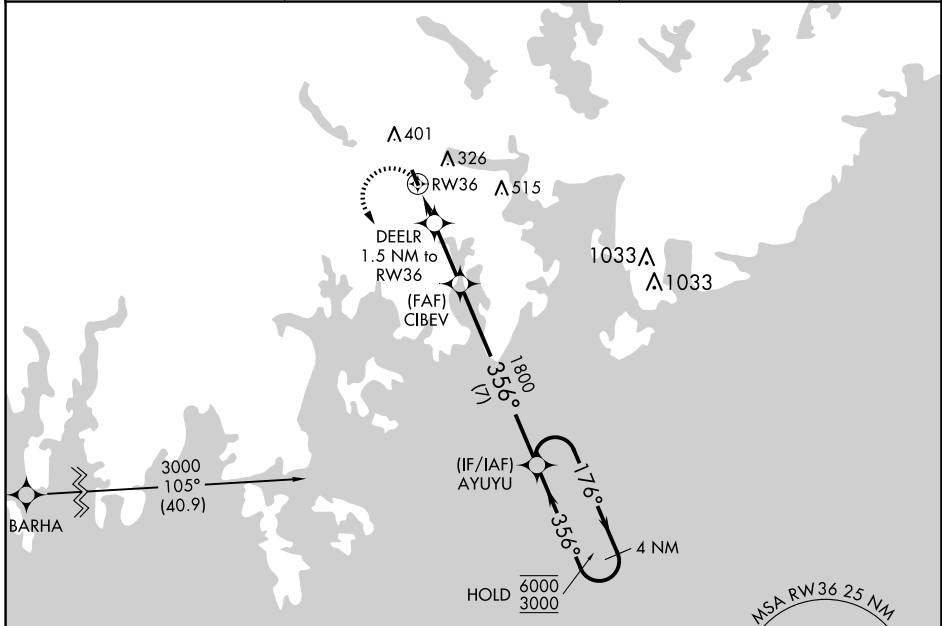
MACHIAS VALLEY (MVM)

RNP APCH - GPS.

**NA** For uncompensated Baro-VNAV systems, LNAV/VNAV NA below -15°C or above 54°C. Helicopter visibility reduction below 1 SM NA. Procedure NA at night. Baro-VNAV NA when using BHB altimeter setting. When local altimeter setting not received, use BHB altimeter setting and increase LNAV/VNAV DA to 774 feet and all visibilities 1/8 SM. Increase all MDAs 100 feet.

**MISSED APPROACH:** Climbing left turn to 3000 direct AYUYU and hold, continue climb-in-hold to 3000.

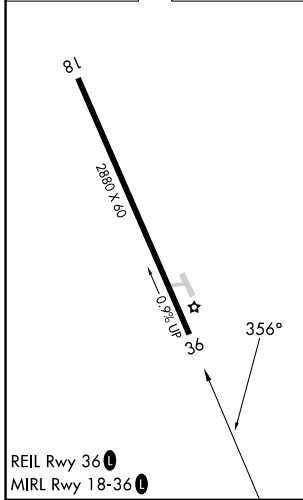
AWOS-AV <b>122.8</b>	BOSTON CENTER <b>124.25 290.5</b>	UNICOM <b>122.8 (CTAF)</b>
-------------------------	--------------------------------------	-------------------------------



NE-1, 16 APR 2026 to 14 MAY 2026

NE-1, 16 APR 2026 to 14 MAY 2026

ELEV	96	TDZE	96
------	----	------	----



3000	AYUYU	AYUYU	4 NM Holding Pattern	
	DEELR 1.5 NM to RW36	CIBEV 1800	176° → 6000 ← 356° 3000	
	RW36	780	GP 4.10° TCH 40	
	1.5 NM	2.3 NM	7 NM	
CATEGORY	A	B	C	D
LNAV/VNAV DA	678-13/4	582 (600-13/4)		NA
LNAV MDA	580-1	484 (500-1)		NA
CIRCLING	700-1 604 (700-1)	760-1 664 (700-1)		NA