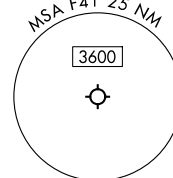


RNAV 1 - DME/DME/IRU or GPS required.

RADAR required for non-GPS equipped aircraft.

LONE STAR DEP CON
125.2 343.65
CTAF
122.9

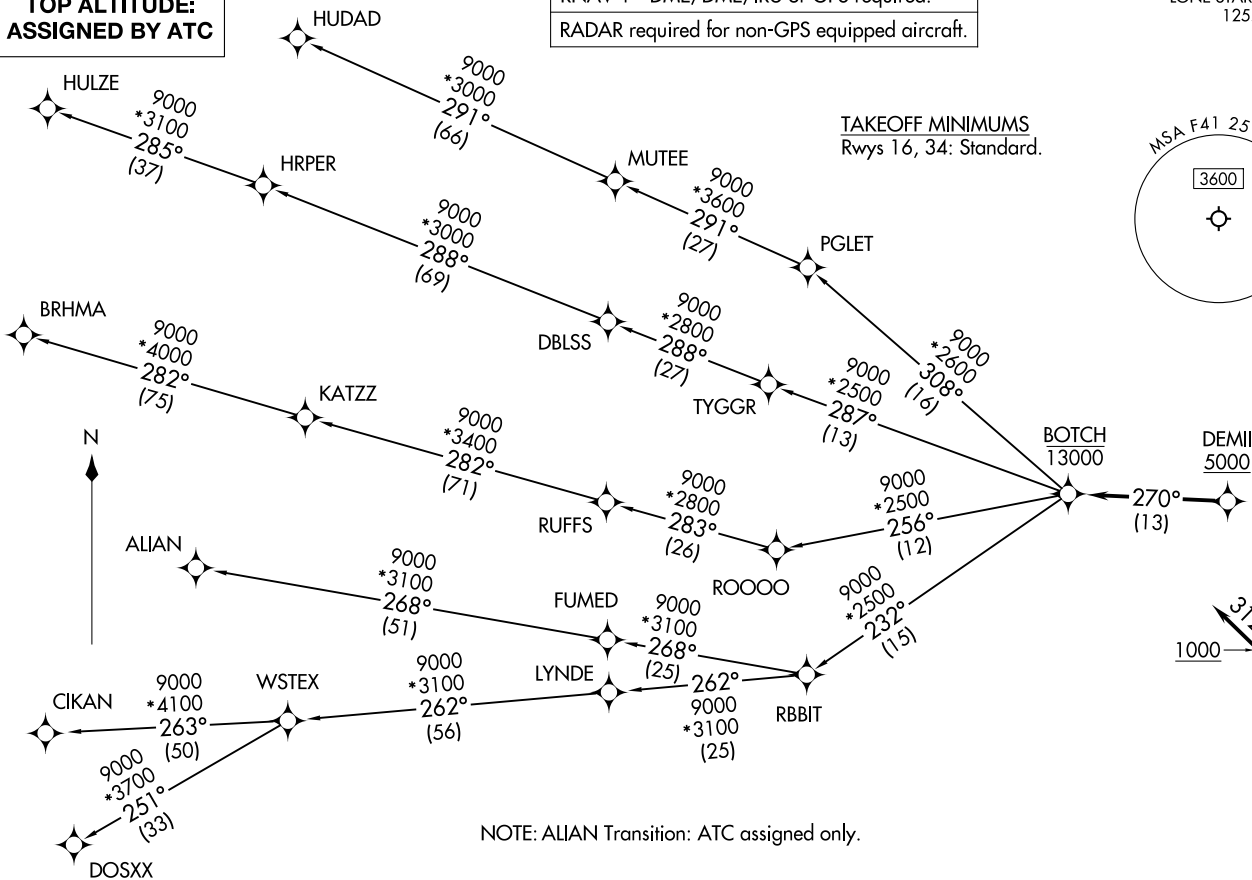
TAKEOFF MINIMUMS
Rwys 16, 34: Standard.



TOP ALTITUDE:
ASSIGNED BY ATC

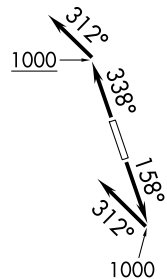
BOTCH ONE DEPARTURE (RNAV)
(BOTCH1 .BOTCH) 17APR25

(BOTCH1 .BOTCH) 25107
AL-6830 (FAA)



NOTE: ALIAN Transition: ATC assigned only.

(CONTINUED ON FOLLOWING PAGE)



NOTE: Chart not to scale.

ENNIS, TEXAS
ENNIS MUNI (F41)

ENNIS MUNI (F41)
ENNIS, TEXAS

BOTCH ONE DEPARTURE (RNAV)



DEPARTURE ROUTE DESCRIPTION

TAKEOFF RUNWAY 16: Climb on heading 158° to 1000, then on heading 312° or as assigned by ATC, for vectors to cross DEMII at or above 5000, thence. . .

TAKEOFF RUNWAY 34: Climb on heading 338° to 1000, then on heading 312° or as assigned by ATC, for vectors to cross DEMII at or above 5000, thence. . .

. . . on track 270° to cross BOTCH at or below 13000, then on (transition). Maintain ATC assigned altitude, expect filed altitude 10 minutes after departure.

ALIAN TRANSITION (BOTCH1.ALIAN)

BRHMA TRANSITION (BOTCH1.BRHMA)

CIKAN TRANSITION (BOTCH1.CIKAN)

DOSXX TRANSITION (BOTCH1.DOSXX)

HUDAD TRANSITION (BOTCH1.HUDAD)

HULZE TRANSITION (BOTCH1.HULZE)

WSTEX TRANSITION (BOTCH1.WSTEX)

SC-2, 16 APR 2026 to 14 MAY 2026

SC-2, 16 APR 2026 to 14 MAY 2026