

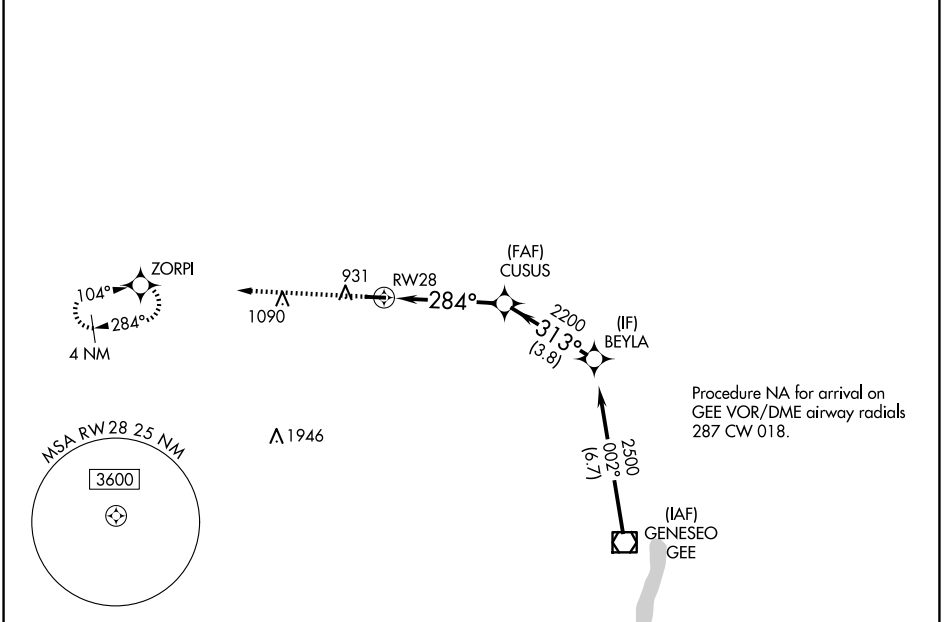
WAAS CH 69330 W28A	APP CRS 284°	Rwy Idg TDZE 778 Apt Elev 780	3854 778 780
----------------------------------------	------------------------	---------------------------------------------------	-----------------------------------------

RNAV (GPS) RWY 28

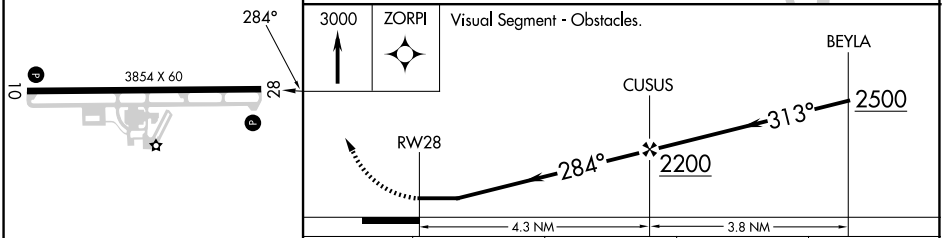
LE ROY (5G \emptyset)

RNP APCH.	MISSED APPROACH: Climb to 3000 direct ZORPI and hold.
<p>Procedure NA at night. Rwy 28 helicopter visibility reduction below 1 SM NA.</p> <p>NA Use Frederick Douglass/Greater Rochester Intl altimeter setting.</p>	

ROC ASOS 124.825	ROCHESTER APP CON 123.7 322.3	UNICOM 122.8 (CTAF)
----------------------------	-----------------------------------------	-------------------------------



ELEV 780	TDZE 778
----------	----------



CATEGORY	A	B	C	D
LP MDA	1 240-1	462 (500-1)	NA	
LNAV MDA	1 240-1	462 (500-1)	NA	

NE-2, 16 APR 2026 to 14 MAY 2026

NE-2, 16 APR 2026 to 14 MAY 2026