

APP CRS	Rwy Ldg	<b>3205</b>
<b>188°</b>	TDZE	<b>287</b>
	Apt Elev	<b>287</b>

# RNAV (GPS) RWY 19

MADISONVILLE MUNI (51R)

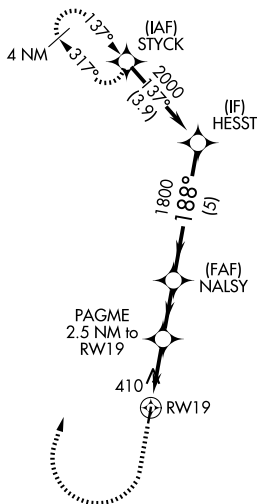
RNP APCH - GPS.

**▽** Procedure NA at night. Rwy 19 helicopter visibility reduction below 1 SM NA. Use UTS altimeter setting.

**▲** NA

MISSED APPROACH: Climb to 1500 then climbing right turn to 2100 direct STYCK and hold.

UTS ASOS <b>119.425</b>	HOUSTON CENTER <b>134.8 269.6</b>	CTAF <b>122.9</b>
----------------------------	--------------------------------------	----------------------

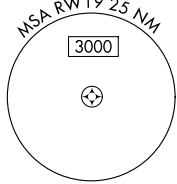


SC-5, 16 APR 2026 to 14 MAY 2026

SC-5, 16 APR 2026 to 14 MAY 2026

ELEV 287	TDZE 287
----------	----------

MIRL Rwy 1-19



1500	2100	STYCK	HESST
↑	↷	✧	
RW19		PAGME 2.5 NM to RW19	NALSY
1120		1800	2000
2.5 NM		2.1 NM	5 NM
CATEGORY	A	B	C D
LNAV MDA	720-1	433 (500-1)	NA