

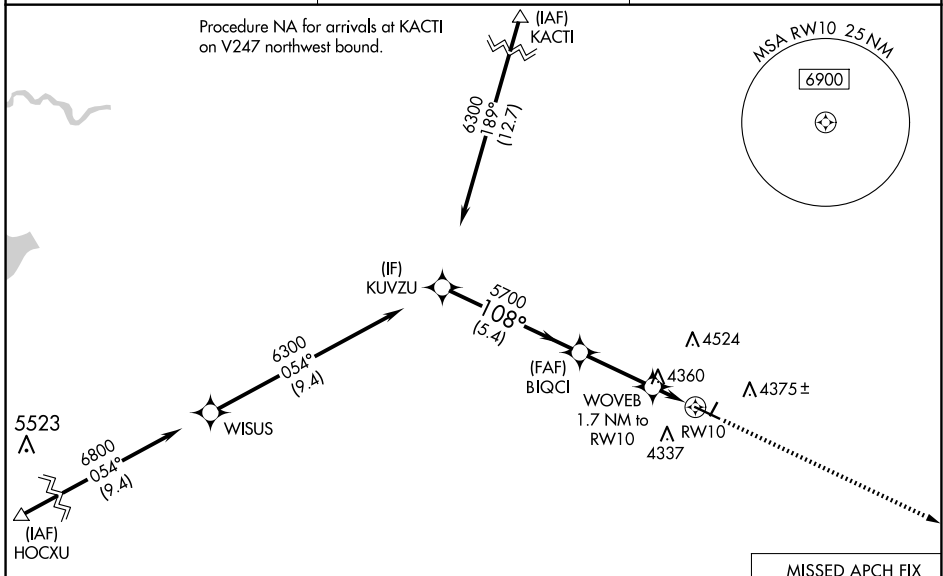
WAAS CH <b>61344</b> W10A	APP CRS <b>108°</b>	Rwy Idg <b>5703</b> TDZE <b>4207</b> Apt Elev <b>4207</b>
---------------------------------	------------------------	---

# RNAV (GPS) RWY 10

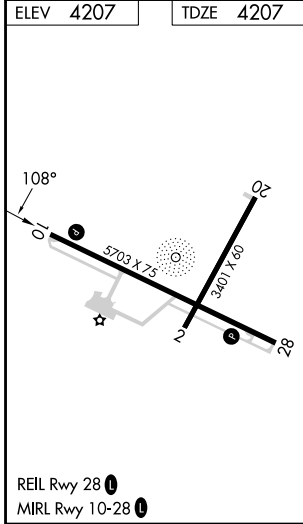
TORRINGTON MUNI (TOR)

RNP APCH - GPS.	MISSED APPROACH: Climb to 6200 direct CIKSI and hold.
<p>▼ For uncompensated Baro-VNAV systems, LNAV/VNAV NA below -26°C or above 54°C.</p>	

ASOS <b>118.375</b>	DENVER CENTER <b>127.95 338.2</b>	UNICOM <b>122.8 (CTAF) 0</b>
------------------------	--------------------------------------	---------------------------------



ELEV <b>4207</b>	TDZE <b>4207</b>
------------------	------------------



KUVZU 6300	BIQCI 5700	WOVEB 1.7 NM to RWY10	RWY10	6200	CIKSI
				GP 3.00° TCH 40	
5.4 NM		2.9 NM		1.7 NM	
CATEGORY	A	B	C	D	
LPV DA	4457-1		250 (300-1)		
LNAV/VNAV DA	4468-1		261 (300-1)		
LNAV MDA	4660-1	453 (500-1)	4660-1 3/8	453 (500-1 3/8)	
CIRCLING	4740-1	533 (600-1)	4880-2 673 (700-2)	4960-2 1/2 753 (800-2 1/2)	

NW-1, 16 APR 2026 to 14 MAY 2026

NW-1, 16 APR 2026 to 14 MAY 2026