

LOC I-LCK <b>110.1</b>	APP CRS <b>232°</b>	Rwy Ldg 23L <b>12103</b> 23R <b>10913</b>
		TDZE <b>740</b> <b>743</b>
		Apt Elev <b>744</b> <b>744</b>

# ILS or LOC RWY 23L

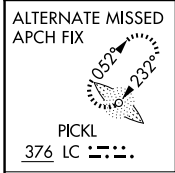
RICKENBACKER INTL (LCK)

**⚠** Circling NA northwest of Rwy 5L-23R. When local altimeter setting not received, use John Glenn Columbus Intl altimeter setting: increase DA to 975 feet; increase all MDAs 40 feet and S-LOC 23L visibility Cats C/D to RVR 5500 and Circling visibility Cat D to 2 1/4 SM. Autopilot coupled approach NA below 1000 MSL.

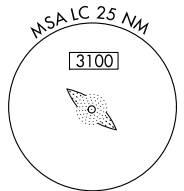
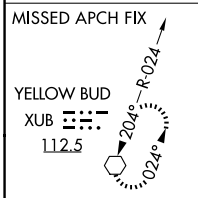
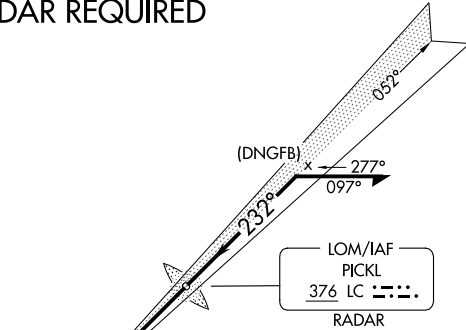
**MALSR**  


**MISSED APPROACH:** Climb to 3000, then left turn direct XUB VOR and hold.

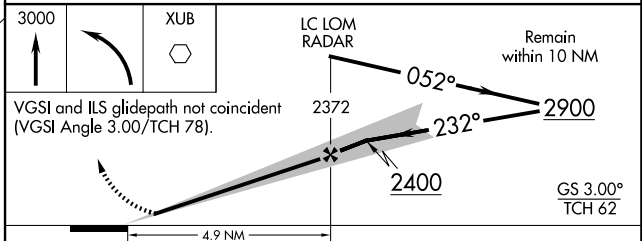
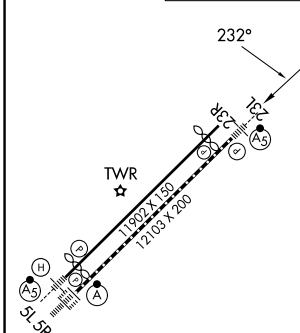
ATIS <b>132.75</b>	COLUMBUS APP CON <b>134.0 279.6</b>	RICK TOWER <b>120.05 348.4</b>	GND CON <b>125.275 275.8</b>
-----------------------	--	-----------------------------------	---------------------------------



## RADAR REQUIRED



ELEV 744	<b>D</b>	TDZE 23L 740
		TDZE 23R 743



CATEGORY	A	B	C	D
S-ILS 23L	940/24 200 (200-1/2)			
S-LOC 23L	1 220/24	480 (500-1/2)	1 220/50	480 (500-1)
SIDESTEP RWY 23R	1 220-1	477 (500-1)	1 220-1 1/2 477 (500-1 1/2)	1 220-2 477 (500-2)
CIRCLING	1 240-1	496 (500-1)	1 280-1 1/2 536 (600-1 1/2)	1 400-2 656 (700-2)

FAF to MAP 4.9 NM					
Knots	60	90	120	150	180
Min:Sec	4:54	3:16	2:27	1:58	1:38