

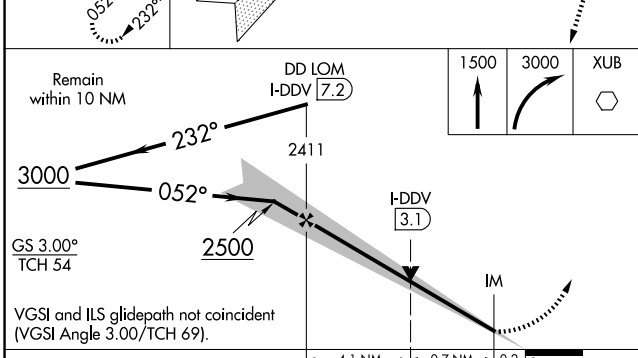
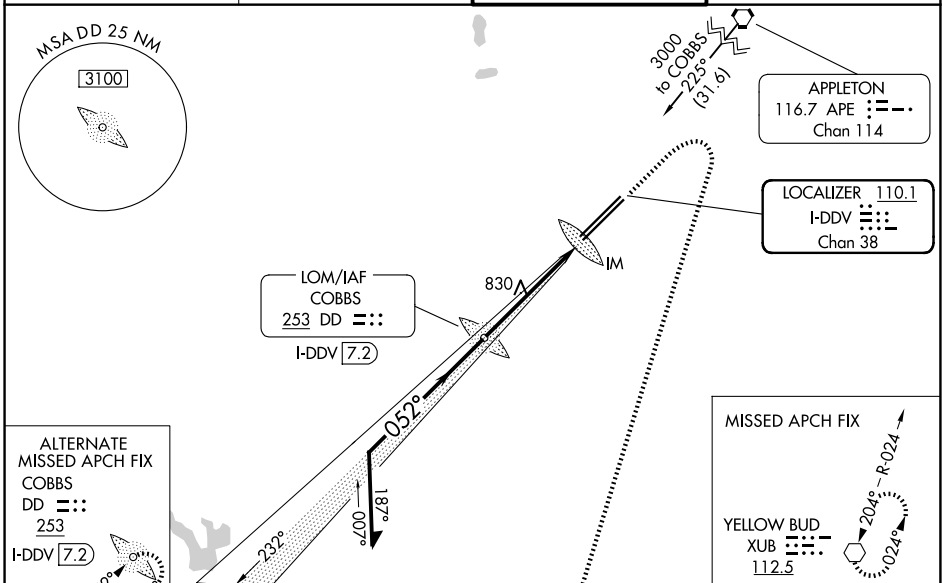
LOC/DME I-DDV 110.1 Chan 38	APP CRS 052°	Rwy Ldg 12103 TDZE 736 Apt Elev 744
---	------------------------	--

ILS or LOC RWY 5R

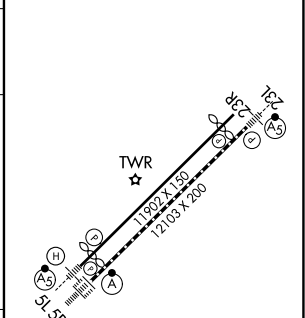
RICKENBACKER INTL (LCK)

ADF or DME required. NA Circling NA northwest of Rwy 5L-23R.	ALSF-2 	MISSED APPROACH: Climb to 1500 then climbing right turn to 3000 direct XUB VOR and hold.
---	------------	--

ATIS 132.75	COLUMBUS APP CON 134.0 279.6	RICK TOWER 120.05 348.4	GND CON 125.275 275.8
-----------------------	--	-----------------------------------	---------------------------------



ELEV 744	D TDZE 736
----------	-------------------



CATEGORY	A	B	C	D
S-ILS 5R	936/18		200 (200-½)	
S-LOC 5R	1080/24	344 (400-½)	1080/30	344 (400-¾)
CIRCLING	1240-1	496 (500-1)	1280-1½ 536 (600-1½)	1400-2 656 (700-2)

TDZL/RCLS Rwy 5R					
REIL Rwy 23R					
HIRL Rwys 5L-23R and 5R-23L					
FAF to MAP 5 NM					
Knots	60	90	120	150	180
Min:Sec	5:00	3:20	2:30	2:00	1:40

EC-2, 16 APR 2026 to 14 MAY 2026

EC-2, 16 APR 2026 to 14 MAY 2026