

(ECHO01, ECHOO) 20086

ECHOO ONE DEPARTURE (RNAV)

AL-6851 (FAA)

COLORADO AIR AND SPACE PORT (CFO)
DENVER, COLORADO

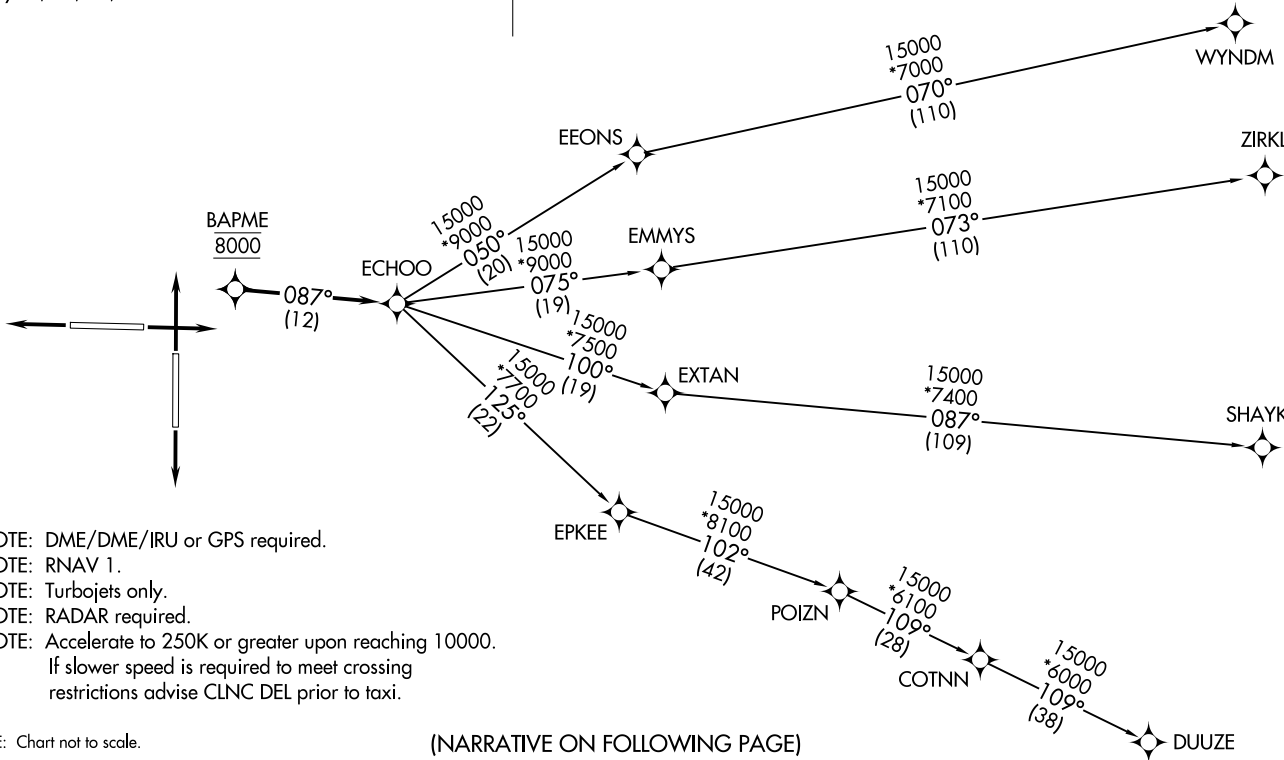
ATIS 119.025
CLNC DEL 124.7
CLNC DEL 128.25 (when twr closed)
DENVER DEP CON 371.95



**TOP ALTITUDE:
FL230**

TAKEOFF MINIMUMS

Rwys 8, 17, 26, 35: Standard.



- NOTE: DME/DME/IRU or GPS required.
- NOTE: RNAV 1.
- NOTE: Turbojets only.
- NOTE: RADAR required.
- NOTE: Accelerate to 250K or greater upon reaching 10000.
If slower speed is required to meet crossing restrictions advise CLNC DEL prior to taxi.

NOTE: Chart not to scale.

(NARRATIVE ON FOLLOWING PAGE)

ECHOO ONE DEPARTURE (RNAV)
(ECHO01, ECHOO) 20086

DENVER, COLORADO
COLORADO AIR AND SPACE PORT (CFO)



DEPARTURE ROUTE DESCRIPTION

TAKEOFF RUNWAY 8: Climb on a heading between 312° CW 228° as assigned by ATC. Thence. . . .

TAKEOFF RUNWAY 17: Climb on a heading between 352° CW 229° as assigned by ATC. Thence. . . .

TAKEOFF RUNWAY 26: Climb on a heading between 315° CW 083° as assigned by ATC. Thence. . . .

TAKEOFF RUNWAY 35: Climb on a heading between 313° CW 172° as assigned by ATC. Thence. . . .

. . . . expect RADAR vectors to cross BAPME at 8000 then on track 087° to ECHOO, then on (transition) maintain FL230 or filed lower altitude. Expect higher filed altitude ten minutes after departure.

DUUZE TRANSITION (ECHOO1.DUUZE)

SHAYK TRANSITION (ECHOO1.SHAYK)

WYNDM TRANSITION (ECHOO1.WYNDM)

ZIRKL TRANSITION (ECHOO1.ZIRKL)

SW-1, 16 APR 2026 to 14 MAY 2026

SW-1, 16 APR 2026 to 14 MAY 2026