

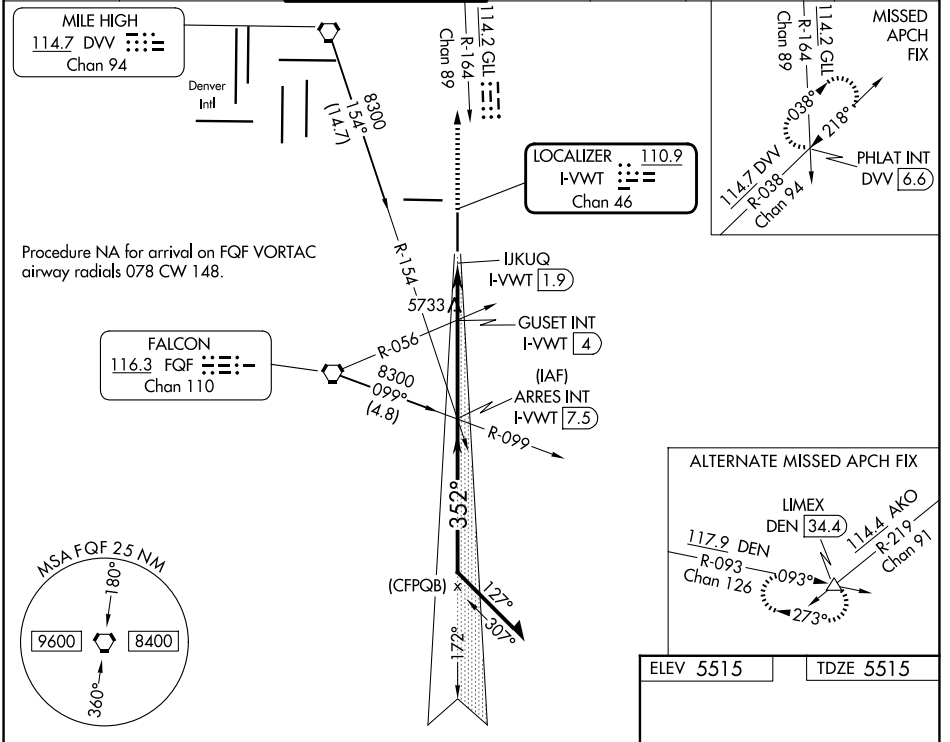
LOC/DME I-VVWT 110.9 Chan 46	APP CRS 352°	Rwy Ldg TDZE Apt Elev 8000 5515 5515
--	------------------------	--

ILS or LOC RWY 35

COLORADO AIR AND SPACE PORT (CFO)

For inop ALS, increase S-LOC 35 Cats C and D visibility to 2½ SM.		MALSRS	MISSED APPROACH: Climb to 7500 on heading 352° and on GLL VOR/DME R-164 to PHLAT INT/DVV 6.6 DME and hold.		

ATIS 119.025	DENVER APP CON 128.25 371.95	SPACE PORT TOWER * 120.2 (CTAF)	GND CON 124.7	CLNC DEL 124.7	CLNC DEL 121.75 (When twr closed)	UNICOM 122.95
------------------------	--	---	-------------------------	--------------------------	--	-------------------------



7500 hdg 352°	GLL R-164	PHLAT INT	ARRES INT I-VVWT 7.5	Remain within 10 NM
*LOC only	IJKUQ I-VVWT 1.9	Guset Int I-VVWT 4	7500	7900
			6300*	7500
	0.5	1 NM	1 NM	3.6 NM
CATEGORY	A	B	C	D
S-ILS 35	5715-½		200 (200-½)	
S-LOC 35	6300-½ 785 (800-½)	6300-¾ 785 (800-¾)	6300-1¾	785 (800-1¾)
Guset Fix Minimums (Dual VOR Receivers or DME Required)				
S-LOC 35	6040-½	525 (600-½)	6040-1	525 (600-1)

ELEV 5515	TDZE 5515
REIL Rwy 8 and 17 HIRL Rwy 8-26 MIRL Rwy 17-35	
FAF to MAP 5.6 NM	
Knots	60 90 120 150 180
Min:Sec	5:36 3:44 2:48 2:14 1:52

SW-1, 16 APR 2026 to 14 MAY 2026

SW-1, 16 APR 2026 to 14 MAY 2026