

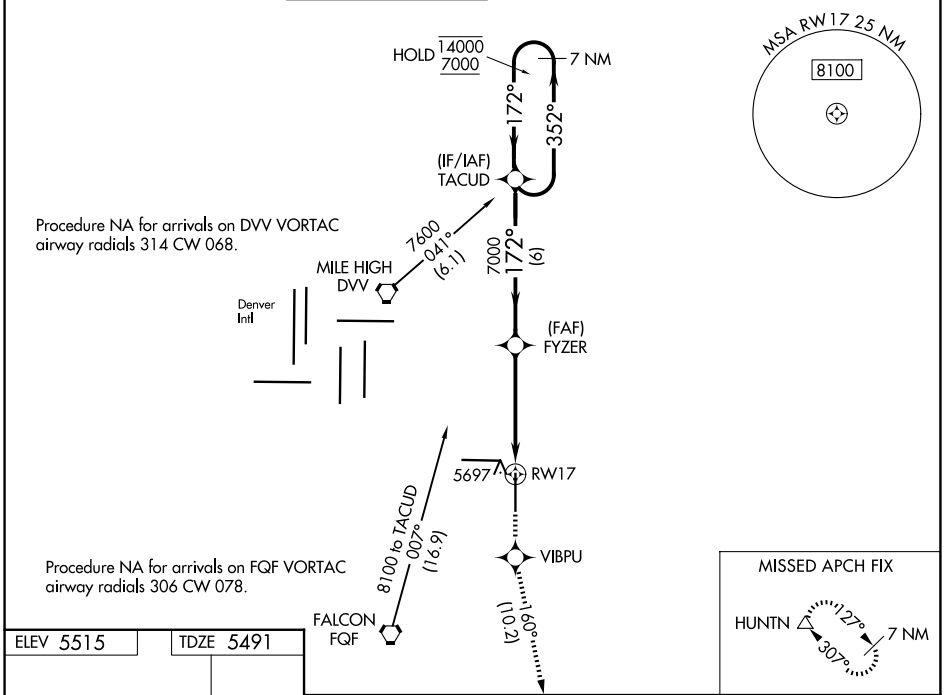
WAAS CH 82209 W17A	APP CRS 172°	Rwy Ldg TDZE Apt Elev	8000 5491 5515
--	------------------------	-----------------------------	---

RNAV (GPS) RWY 17

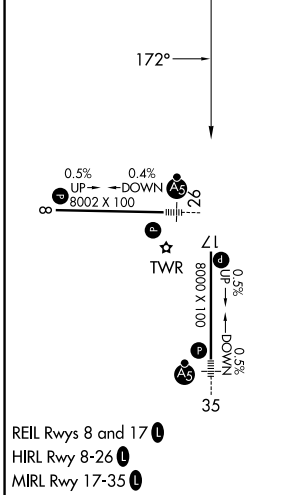
COLORADO AIR AND SPACE PORT (CFO)

RNP APCH-GPS.			MISSED APPROACH: Climb to 8500 direct VIBPU and on track 160° to HUNTN and hold.			
▼ For uncompensated Baro-VNAV systems, LNAV/VNAV NA below -25°C or above 48°C.						

ATIS 119.025	DENVER APP CON 128.25 371.95	SPACE PORT TOWER* 120.2 (CTAF) 0	GND CON 124.7	CLNC DEL 124.7	CLNC DEL 121.75 (When twr closed)	UNICOM 122.95
------------------------	--	--	-------------------------	--------------------------	--	-------------------------



ELEV 5515	TDZE 5491
-----------	-----------



	7 NM Holding Pattern	TACUD	FYZER	8500	VIBPU	HUNTN
				↑	✦	tr 160°
	14000 ← 352°	7000 → 172°	7000			
					* 1.5 NM to RWY 17	* LNAV only
	GP 3.00°					
	TCH 55					
		6 NM	3.1 NM	1.5 NM		
CATEGORY	A	B	C	D		
LPV DA		5691- ³ / ₄	200 (200- ³ / ₄)			
LNAV/VNAV DA		5916-1 ³ / ₈	425 (500-1 ³ / ₈)			
LNAV MDA	6000-1	509 (500-1)	6000-1 ¹ / ₂	509 (500-1 ¹ / ₂)		
CIRCLING	6000-1	485 (500-1)	6100-1 ¹ / ₂	6300-2 ¹ / ₂	585 (600-1 ¹ / ₂)	785 (800-2 ¹ / ₂)