

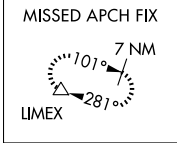
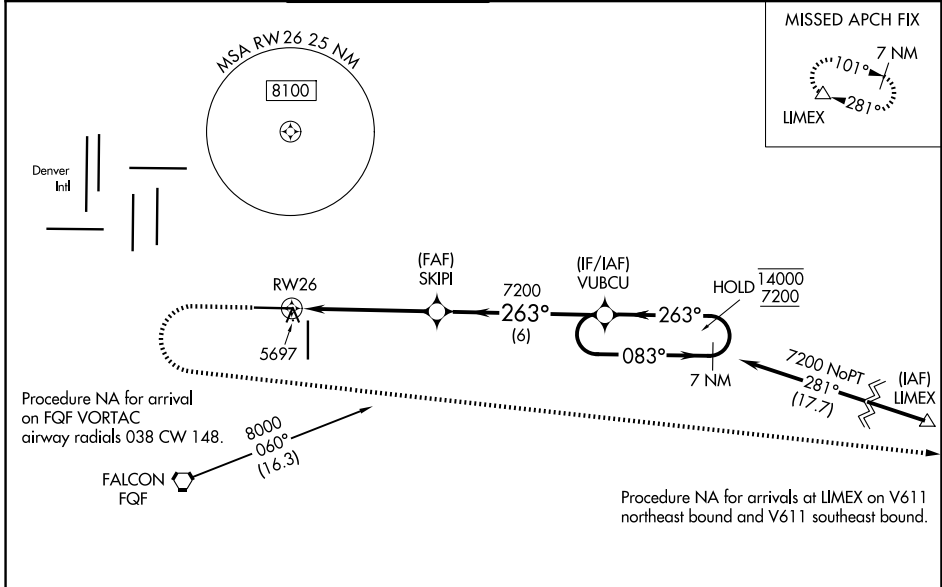
WAAS CH 93909 W26A	APP CRS 263°	Rwy Ldg TDZE Apt Elev	8002 5489 5515
--	------------------------	-----------------------------	---

RNAV (GPS) RWY 26

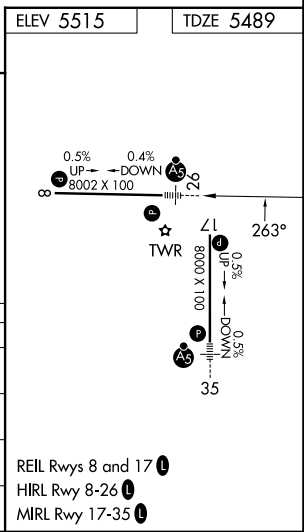
COLORADO AIR AND SPACE PORT (CFO)

RNP APCH.	MALSR	MISSED APPROACH: (Do not exceed 200K until LIMEX) Climb to 6100 then climbing left turn to 7600 direct LIMEX and hold.
<p>For uncompensated Baro-VNAV systems, LNAV/VNAV NA below -25°C or above 48°C. For inop ALS, increase LNAV/VNAV all Cats visibility to 1½ SM, and increase LNAV Cat C/D visibility to 1½ SM.</p>		

ATIS 119.025	DENVER APP CON 128.25 371.95	SPACE PORT TOWER * 120.2 (CTAF)	GND CON 124.7	CLNC DEL 124.7	CLNC DEL 121.75 (When twr closed)	UNICOM 122.95
------------------------	--	---	-------------------------	--------------------------	--	-------------------------



ELEV 5515	TDZE 5489			
6100	7600	LIMEX		
<p>*LNAV only</p> <p>*1.4 NM to RW26</p> <p>RW26</p> <p>7200</p> <p>263°</p> <p>083°</p> <p>14000 7200</p> <p>7200</p> <p>GP 3.00° TCH 50</p> <p>1.4 NM</p> <p>3.8 NM</p> <p>6 NM</p> <p>7 NM Holding Pattern</p>				
CATEGORY	A	B	C	D
LPV DA		5689-½	200 (200-½)	
LNAV/VNAV DA		5858-¾	369 (400-¾)	
LNAV MDA	5960-½	471 (500-½)	5960-1	471 (500-1)
CIRCLING	6000-1	485 (500-1)	6100-1½	6300-2½
			585 (600-1½)	785 (800-2½)



SW-1, 16 APR 2026 to 14 MAY 2026

SW-1, 16 APR 2026 to 14 MAY 2026