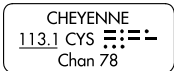
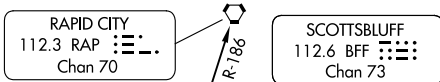
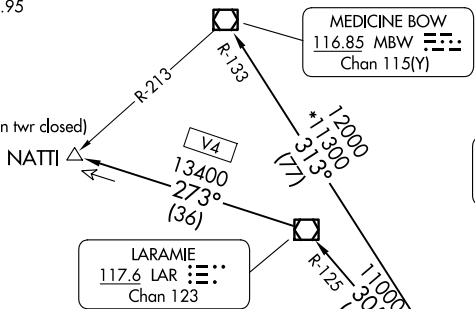


RADAR required.

(YELLOW5.DEN) 251.63
YELLOWSTONE FIVE DEPARTURE

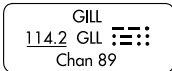
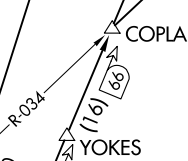
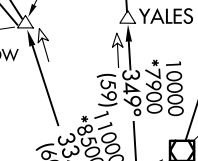
COLORADO AIR AND SPACE PORT (CTO)
DENVER, COLORADO
AL-8851 (FAA)

DENVER DEP CON
128.25 371.95
ATIS
119.025
CLNC DEL
124.7
CLNC DEL
121.75 (when twr closed)

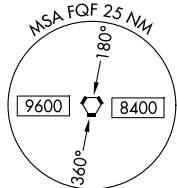
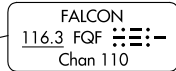
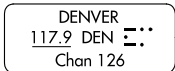


**TOP ALTITUDE:
ASSIGNED BY ATC**

YAMMI
12000 (For MEDICINE BOW
Transition only)



MOCA 7900 for SCOTTSBLUFF Transition.



TAKEOFF MINIMUMS
All Rwys: Standard.

NOTE: Chart not to scale.

(CONTINUED ON FOLLOWING PAGE)

YELLOWSTONE FIVE DEPARTURE
(YELLOW5.DEN) 12JUN25

DENVER, COLORADO
COLORADO AIR AND SPACE PORT (CTO)



DEPARTURE ROUTE DESCRIPTION

TAKEOFF ALL RUNWAYS: Fly assigned heading and altitude for RADAR vectors to assigned route. Expect filed altitude 10 minutes after departure.

LOST COMMUNICATIONS: If no transmissions are received within one minute after departure, maintain assigned heading until 7000, then climb to filed altitude direct to DEN VOR/DME, then on assigned route. If filed altitude is above 10000, cross DEN VOR/DME at or above 11000.

CHEYENNE TRANSITION (YELLO5.CYS): From over DEN VOR/DME on DEN R-349 and CYS R-163 to CYS VORTAC.

HANKI TRANSITION (YELLO5.HANKI): From over DEN VOR/DME on DEN R-015 and GLL R-034 to HANKI.

LARAMIE TRANSITION (YELLO5.LAR): From over DEN VOR/DME on DEN R-334 and LAR R-125 to LAR VOR/DME.

MEDICINE BOW TRANSITION (YELLO5.MBW): From over DEN VOR/DME on DEN R-334 and MBW R-133 to MBW VOR/DME.

NATTI TRANSITION (YELLO5.NATTI): From over DEN VOR/DME on DEN R-334 and LAR R-125 to LAR VOR/DME, then on LAR R-273 to NATTI.

RAPID CITY TRANSITION (YELLO5.RAP): From over DEN VOR/DME on DEN R-359 and GLL R-174 to GLL VOR/DME, then on GLL R-005 and RAP R-186 to RAP VORTAC.

SCOTTSBLUFF TRANSITION (YELLO5.BFF): From over DEN VOR/DME on DEN R-015 and BFF R-191 to BFF VORTAC.

SW-1, 16 APR 2026 to 14 MAY 2026

SW-1, 16 APR 2026 to 14 MAY 2026