

GARLAND SIX DEPARTURE  
(GARL6.TT) 17APR25

BOURLAND FLD (5MF)  
FORT WORTH, TEXAS

LONE STAR DEP CON  
135.975 379.9  
CTAF  
123.0

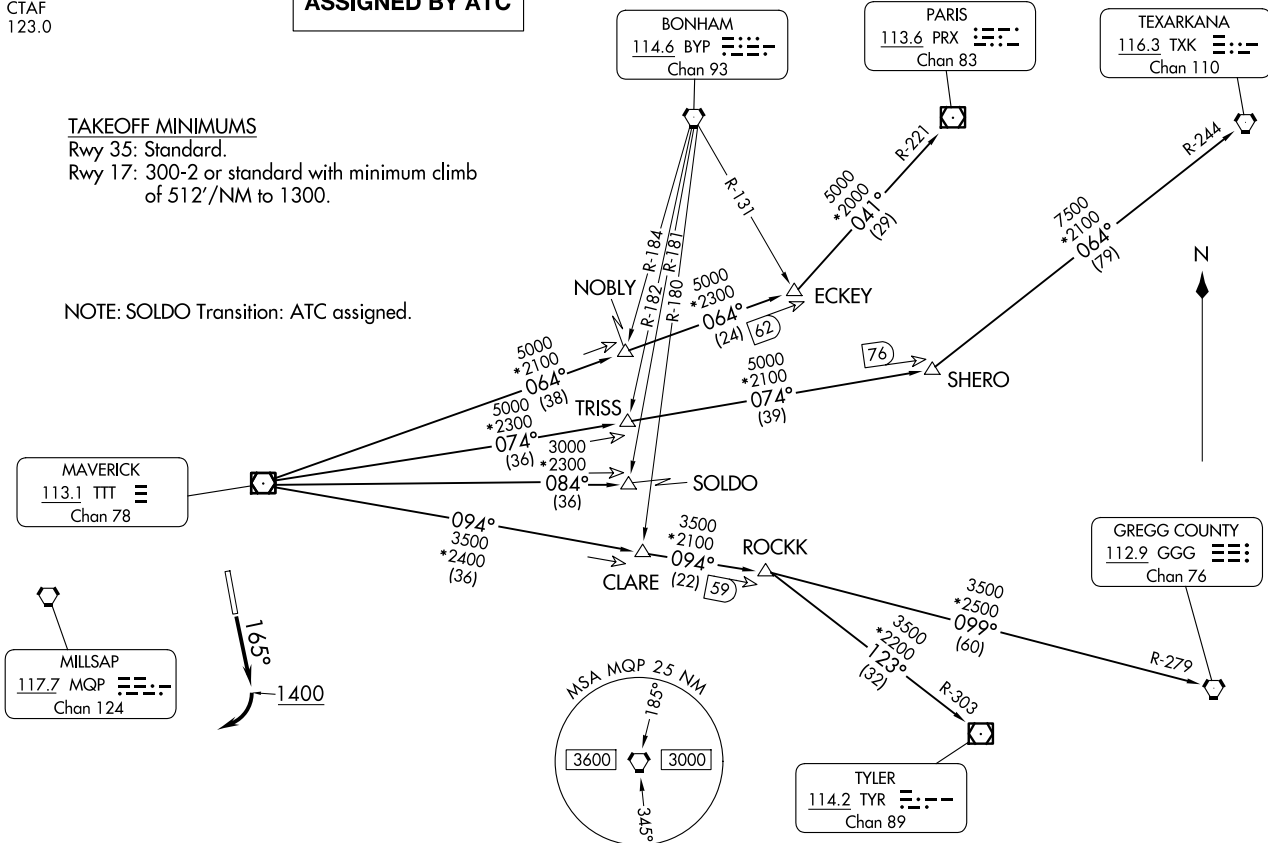
**TOP ALTITUDE:  
ASSIGNED BY ATC**

**RADAR and DME required.**

TAKEOFF MINIMUMS

Rwy 35: Standard.  
Rwy 17: 300-2 or standard with minimum climb  
of 512'/NM to 1300.

NOTE: SOLDO Transition: ATC assigned.



NOTE: Chart not to scale.

(CONTINUED ON FOLLOWING PAGE)

(GARL6.TT) 25107

GARLAND SIX DEPARTURE

AL-6854 (FAA)

BOURLAND FLD (5MF)  
FORT WORTH, TEXAS

# GARLAND SIX DEPARTURE



## DEPARTURE ROUTE DESCRIPTION

TAKEOFF RUNWAY 17: Climb on heading 165° to 1400 before turning right.

When entering controlled airspace, fly assigned heading for RADAR vectors to appropriate route. Maintain ATC assigned altitude.

GREGG COUNTY TRANSITION (GARL6.GGG): From over TTT VOR/DME on TTT R-094 to ROCKK, then on GGG R-279 to GGG VORTAC.

PARIS TRANSITION (GARL6.PRX): From over TTT VOR/DME on TTT R-064 to ECKEY, then on PRX R-221 to PRX VOR/DME.

SOLDO TRANSITION (GARL6.SOLDO): From over TTT VOR/DME on TTT R-084 to SOLDO.

TEXARKANA TRANSITION (GARL6.TXK): From over TTT VOR/DME on TTT R-074 to SHERO, then on TXK R-244 to TXK VORTAC.

TYLER TRANSITION (GARL6.TYR): From over TTT VOR/DME on TTT R-094 to ROCKK, then on TYR R-303 to TYR VOR/DME.

SC-2, 16 APR 2026 to 14 MAY 2026

SC-2, 16 APR 2026 to 14 MAY 2026