

| | | | |
|--|------------------------|-----------------------------|---|
| WAAS CH 90532 W29A | APP CRS 286° | Rwy Ldg TDZE Apt Elev | 3602 120 121 |
|--|------------------------|-----------------------------|---|

RNAV (GPS) RWY 29

NEW KENT COUNTY (W96)

RNP APCH - GPS.

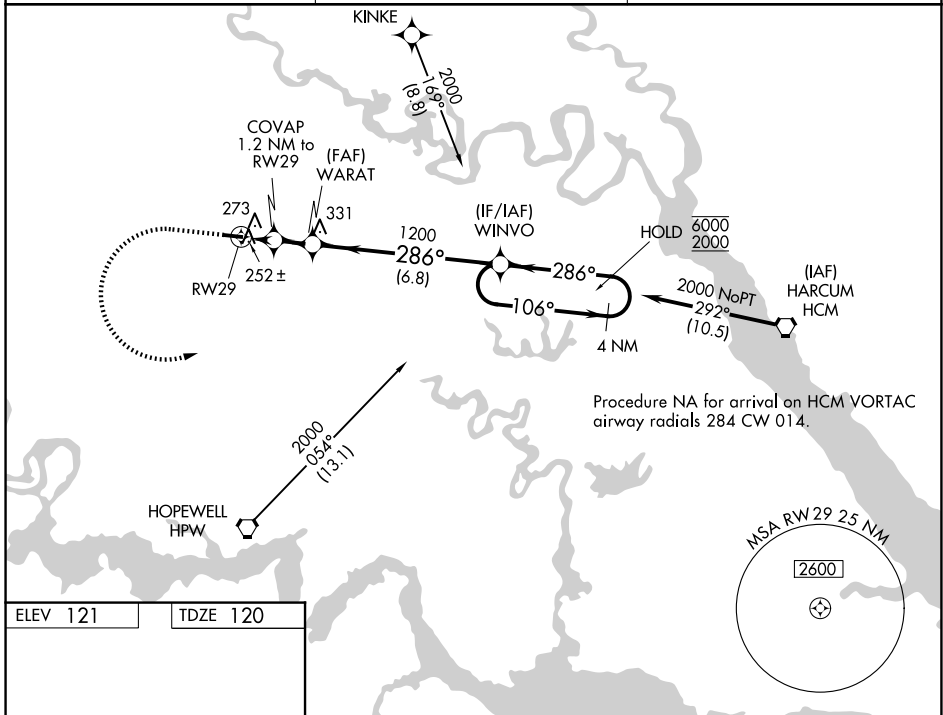
Rwy 29 helicopter visibility reduction below 1 SM NA.
 Procedure NA at night. When local altimeter setting not received,
 use RIC altimeter setting: increase all MDAs 40 feet and LNAV visibility
 Cat C 1/8 SM; increase LP and Circling visibility Cat C 1/4 SM.

MISSED APPROACH: Climb to 900 then climbing left turn to 2000 direct WINVO and hold.

AWOS-3
119.875

POTOMAC APP CON
126.4 282.375

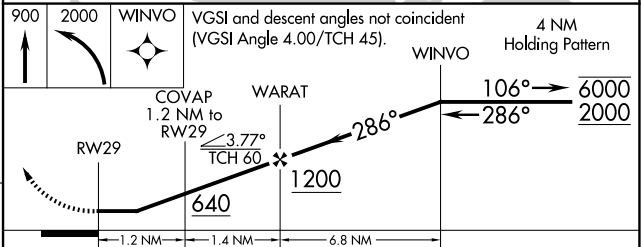
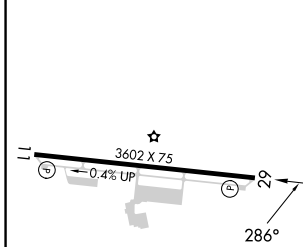
UNICOM
122.8 (CTAF) 1



NE-3, 16 APR 2026 to 14 MAY 2026

NE-3, 16 APR 2026 to 14 MAY 2026

| | |
|----------|----------|
| ELEV 121 | TDZE 120 |
|----------|----------|



| CATEGORY | A | B | C | D |
|----------|-------|-------------|------------------------------|----|
| LP MDA | 540-1 | 420 (500-1) | 540-1 1/8 420 (500-1 1/8) | NA |
| LNAV MDA | 560-1 | 440 (500-1) | 560-1 1/4 440 (500-1 1/4) | NA |
| CIRCLING | 620-1 | 499 (500-1) | 760-1 3/4 639 (700-1 3/4) | NA |