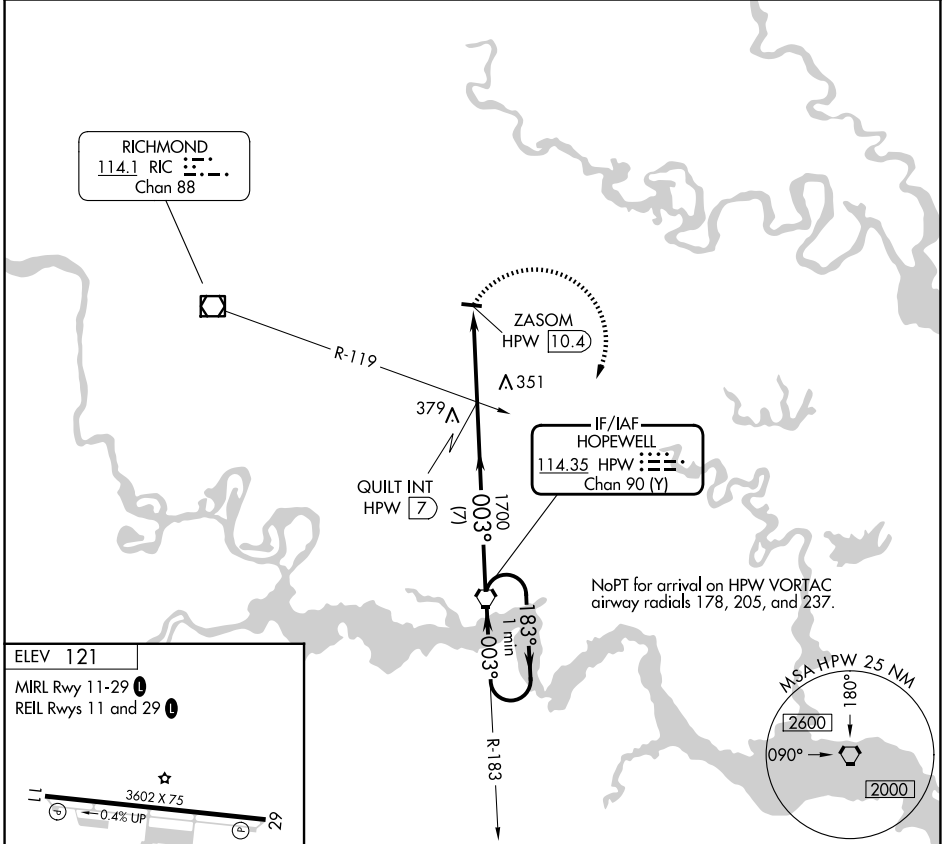


VORTAC HPW 114.35 Chan 90 (Y)	APP CRS 003°	Rwy Ldg TDZE Apt Elev 121	N/A N/A 121
---	------------------------	--	--

VOR-A
NEW KENT COUNTY (W96)

NA Use Richmond Intl altimeter setting. Procedure NA at night. Helicopter visibility reduction below 1 SM NA.	MISSED APPROACH: Climbing right turn to 2000 direct HPW VORTAC and hold.
--	--

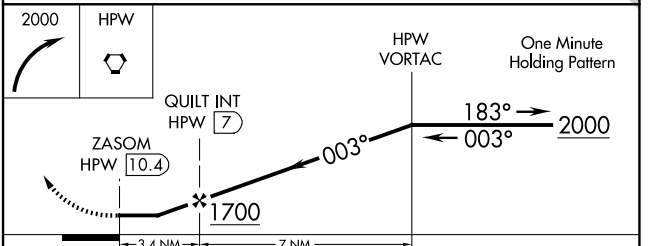
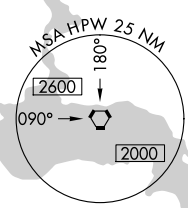
AWOS-3 119.875	RIC ASOS 119.15 263.025	POTOMAC APP CON 126.4 282.375	UNICOM 122.8 (CTAF) 0
--------------------------	-----------------------------------	---	--



ELEV **121**

MIRL Rwy 11-29 **0**
REIL Rwy 11 and 29 **0**

3602 X 75
0.4% UP



FAF to MAP 3.4 NM					
Knots	60	90	120	150	180
Min:Sec	3:24	2:16	1:42	1:22	1:08
CATEGORY	A		B		C
CIRCLING	660-1		539 (600-1)		760-1 ³ / ₄ 639 (700-1 ³ / ₄)

NE-3, 16 APR 2026 to 14 MAY 2026

NE-3, 16 APR 2026 to 14 MAY 2026