

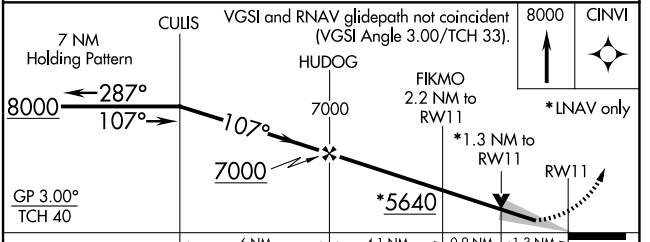
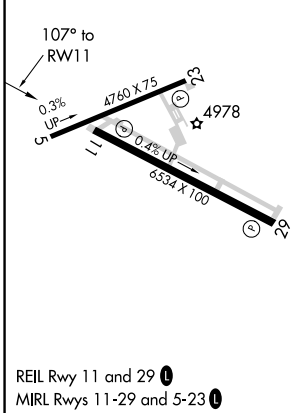
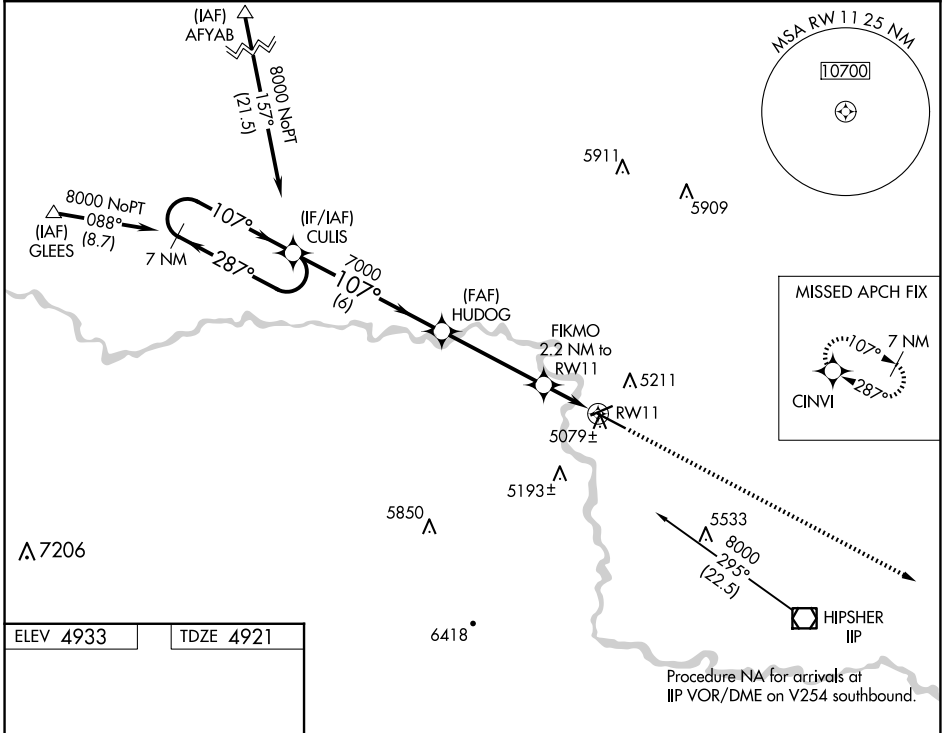
WAAS CH 58018 W11A	APP CRS 107°	Rwy Idg TDZE Apt Elev 6534 4921 4933
--	------------------------	--

RNAV (GPS) RWY 11

CONVERSE COUNTY (DGW)

RNP APCH.	MISSED APPROACH: Climb to 8000 direct CINVI and hold.
▼ For uncompensated Baro-VNAV systems, LNAV/VNAV NA below -24°C (-11°F) or above 39°C (102°F).	

ASOS 135.225	DENVER CENTER 135.6 363.025	UNICOM 122.8 (CTAF) 0
------------------------	---------------------------------------	---------------------------------



GP 3.00° TCH 40	VGSIs and RNAV glidepath not coincident (VGSIs Angle 3.00/TCH 33).			
CATEGORY	A	B	C	D
LPV DA	5121-3/4 200 (200-3/4)			
LNAV/VNAV DA	5329-1 1/2 408 (400-1 1/2)			
LNAV MDA	5340-1 419 (500-1)		5340-1 1/4 419 (500-1 1/4)	

NW-1, 16 APR 2026 to 14 MAY 2026

NW-1, 16 APR 2026 to 14 MAY 2026