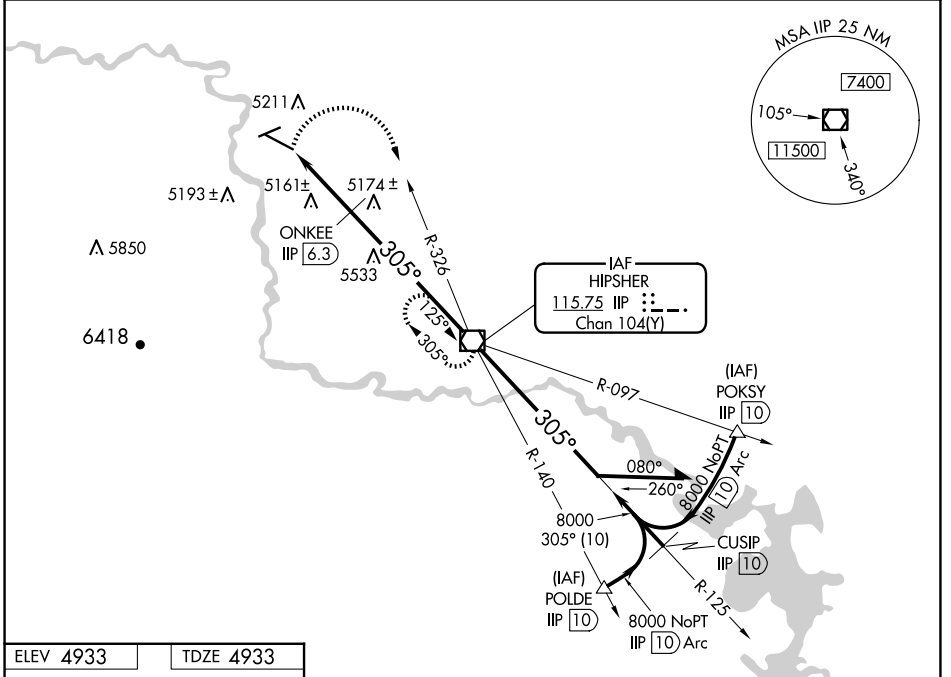


VOR/DME IIP <b>115.75</b> Chan <b>104(Y)</b>	APP CRS <b>305°</b>	Rwy Idg TDZE Apt Elev <b>6534</b> <b>4933</b> <b>4933</b>
--	------------------------	--

**VOR RWY 29**  
CONVERSE COUNTY (DGW)

**MISSED APPROACH:** Climbing right turn to 8000 via heading 160° and IIP VOR/DME R-326 to IIP VOR/DME and hold, continue climb-in-hold to 8000.

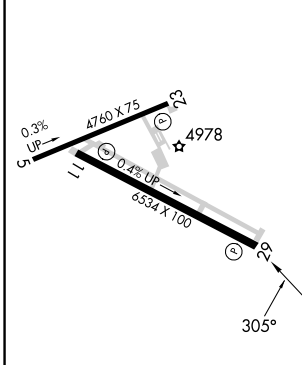
ASOS <b>135.225</b>	DENVER CENTER <b>135.6 363.025</b>	UNICOM <b>122.8 (CTAF)</b>
------------------------	---------------------------------------	-------------------------------



NW-1, 16 APR 2026 to 14 MAY 2026

NW-1, 16 APR 2026 to 14 MAY 2026

ELEV 4933	TDZE 4933
-----------	-----------



REIL Rwy 11 and 29  
MIRL Rws 11-29 and 5-23

FAF to MAP 9.4 NM

Knots	60	90	120	150	180
Min:Sec	9:24	6:16	4:42	3:46	3:08

8000, IIP R-326, hdg 160°, VGSi and descent angles not coincident (VGSi Angle 3.00/TCH 45), VOR/DME, IIP, 125°, 305°, 8000, 5960, 3.03° TCH 40, 1.4, 1.7, 6.3 NM, 1/4, Remain within 10 NM.

CATEGORY	A	B	C	D
S-29	5960-1¼ 1027 (1100-1¼)	5960-1½ 1027 (1100-1½)	5960-3	1027 (1100-3)
CIRCLING	5960-1¼ 1027 (1100-1¼)	5960-1½ 1027 (1100-1½)	5960-3	1027 (1100-3)
ONKEE FIX MINIMUMS				
S-29	5420-1	487 (500-1)	5420-1½ 487 (500-1½)	5420-1½ 487 (500-1½)
CIRCLING	5520-1	587 (600-1)	5680-2¼ 747 (800-2¼)	5820-3 887 (900-3)