

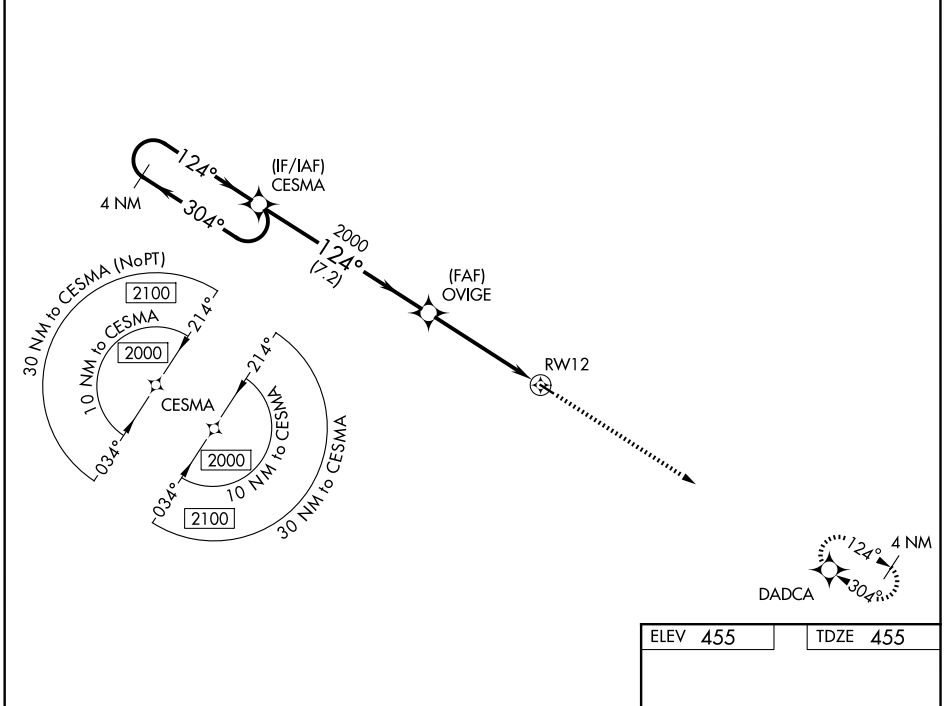
WAAS CH 90408 W12A	APP CRS 124°	Rwy Ldg 3197 TDZE 455 Apt Elev 455
--	------------------------	---

RNAV (GPS) RWY 12

PRENTISS-JEFFERSON DAVIS COUNTY (M43)

RNP APCH.	<p>⚠ Baro-VNAV NA. Use Brookhaven altimeter setting; when not received, use Hattiesburg/Laurel altimeter setting and increase all DA 27 feet and all MDA 40 feet and increase LPV and LNAV/VNAV all Cats visibility 1/8 mile. Rwy 12 helicopter visibility reduction below 3/4 SM NA.</p>	<p>MISSED APPROACH: Climb to 2000 direct DADCA and hold.</p>
-----------	--	---

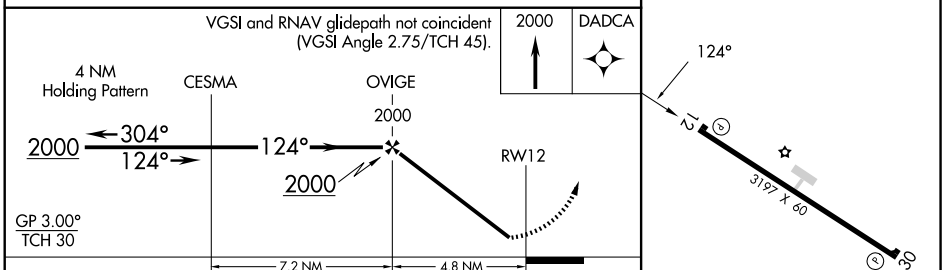
1R7 AWOS-3P 118.125	HOUSTON CENTER 126.8 327.8	UNICOM 122.8 (CTAF) 0
-------------------------------	--------------------------------------	---------------------------------



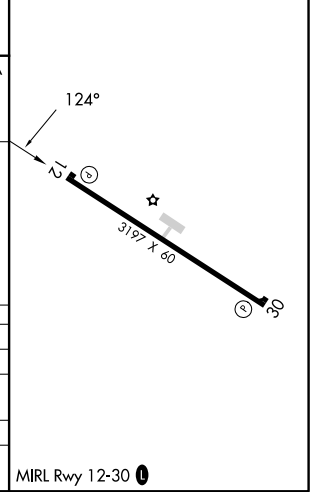
SC-4, 16 APR 2026 to 14 MAY 2026

SC-4, 16 APR 2026 to 14 MAY 2026

ELEV 455	TDZE 455
----------	----------



CATEGORY	A	B	C	D
LPV DA	770-1 1/8	315 (400-1 1/8)		NA
LNAV/VNAV DA	959-1 3/4	504 (600-1 3/4)		NA
LNAV MDA	1020-1	565 (600-1)		NA
CIRCLING	1080-1	625 (700-1)		NA



RNAV (GPS) RWY 12

MIRL Rwy 12-30 0