

WAAS CH 49138 W09A	APP CRS 089°	Rwy Ldg 4043 TDZE 1243 Apt Elev 1243
--	------------------------	---

RNAV (GPS) RWY 9

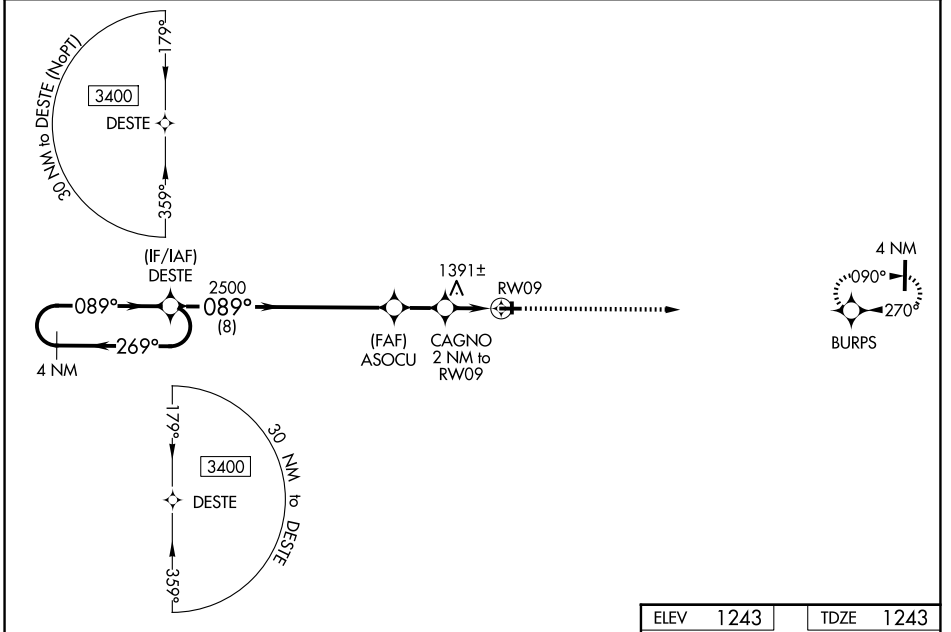
CUMBERLAND MUNI (UBE)

RNP APCH - GPS.

▼ Baro-VNAV NA when using Rice Lake altimeter setting. For uncompensated Baro-VNAV systems, LNAV/VNAV NA below -17°C or above 54°C. Rwy 9 helicopter visibility reduction below ¼ SM NA. VDP NA when using Rice Lake altimeter setting. When local altimeter setting not received, use Rice Lake altimeter setting; increase LPV DA to 1536 feet and LNAV/VNAV DA to 1562 feet and all MDA 60 feet; increase LNAV/VNAV all Cats visibility 1/8 mile and increase LNAV Cat C/D visibility and Circling Cat C/D visibility 1/4 mile. Circling Rwy 18, 36 NA at night.

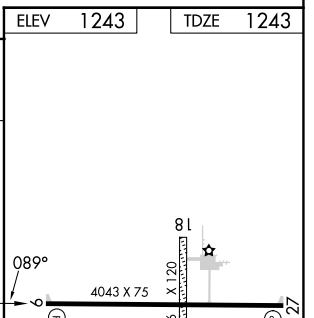
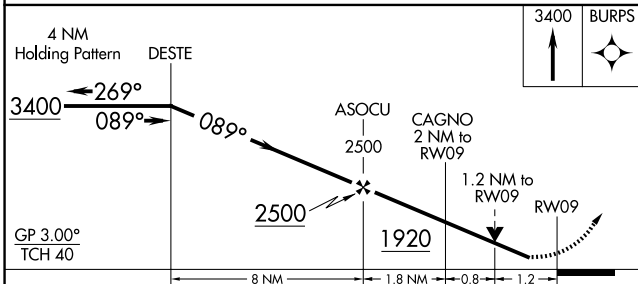
MISSED APPROACH:
Climb to 3400 direct BURPS and hold.

AWOS-3PT 119.175	MINNEAPOLIS CENTER 125.3 335.6	GCO 121.725	UNICOM 122.8 (CTAF) 0
----------------------------	--	-----------------------	---------------------------------



EC-3, 16 APR 2026 to 14 MAY 2026

EC-3, 16 APR 2026 to 14 MAY 2026



CATEGORY	A	B	1.9 NM C	D
LPV DA		1493-1	250 (300-1)	
LNAV/VNAV DA		1519-1	276 (300-1)	
LNAV MDA	1660-1	417 (500-1)	1660-1 1/8	417 (500-1 1/8)
CIRCLING	1660-1 417 (500-1)	1940-1 697 (700-1)	1940-2 697 (700-2)	1980-2 1/4 737 (800-2 1/4)

ELEV 1243	TDZE 1243
-----------	-----------

REIL Rwys 9 and 27 0
MIRL Rwy 9-27 0